



ELSEVIER

Available online at [www.sciencedirect.com](http://www.sciencedirect.com)

SCIENCE @ DIRECT®

Ore Geology Reviews 27 (2005) 53–89

ORE GEOLOGY  
REVIEWS

[www.elsevier.com/locate/oregeorev](http://www.elsevier.com/locate/oregeorev)

## 2: Hydrothermal ore deposits related to post-orogenic extensional magmatism and core complex formation: The Rhodope Massif of Bulgaria and Greece

Peter Marchev<sup>a,\*</sup>, Majka Kaiser-Rohrmeier<sup>b</sup>, Christoph Heinrich<sup>b</sup>,  
Maria Ovtcharova<sup>b</sup>, Albrecht von Quadt<sup>b</sup>, Raya Raicheva<sup>a</sup>

<sup>a</sup> *Geological Institute, Bulgarian Academy of Sciences, Acad. G. Bonchev St., 1113 Sofia, Bulgaria*

<sup>b</sup> *Isotope Geology and Mineral Resources, Department of Earth Sciences, ETH Zürich, Sonneggstrasse 5, CH-8092 Zürich, Switzerland*

Received 9 August 2004; accepted 25 February 2005

Available online 14 October 2005

### Abstract

The Rhodope Massif in southern Bulgaria and northern Greece hosts a range of Pb–Zn–Ag, Cu–Mo and Au–Ag deposits in high-grade metamorphic, continental sedimentary and igneous rocks. Following a protracted thrusting history as part of the Alpine–Himalayan collision, major late orogenic extension led to the formation of metamorphic core complexes, block faulting, sedimentary basin formation, acid to basic magmatism and hydrothermal activity within a relatively short period of time during the Early Tertiary. Large vein and carbonate replacement Pb–Zn deposits hosted by high-grade metamorphic rocks in the Central Rhodopean Dome (e.g., the Madan ore field) are spatially associated with low-angle detachment faults as well as local silicic dyke swarms and/or ignimbrites. Ore formation is essentially synchronous with post-extensional dome uplift and magmatism, which has a dominant crustal magma component according to Pb and Sr isotope data. Intermediate- and high-sulphidation Pb–Zn–Ag–Au deposits and minor porphyry Cu–Mo mineralization in the Eastern Rhodopes are predominantly hosted by veins in shoshonitic to high-K calc-alkaline volcanic rocks of closely similar age. Base-metal-poor, high-grade gold deposits of low sulphidation character occurring in continental sedimentary rocks of synextensional basins (e.g., Ada Tepe) show a close spatial and temporal relation to detachment faulting prior and during metamorphic core complex formation. Their formation predates local magmatism but may involve fluids from deep mantle magmas.

The change in geochemical signatures of Palaeogene magmatic rocks, from predominantly silicic types in the Central Rhodopes to strongly fractionated shoshonitic (Bulgaria) to calc-alkaline and high-K calc-alkaline (Greece) magmas in the Eastern Rhodopes, coincides with the enrichment in Cu and Au relative to Pb and Zn of the associated ore deposits. This trend also correlates with a decrease in the radiogenic Pb and Sr isotope components of the magmatic rocks from west to east, reflecting a reduced crustal contamination of mantle magmas, which in turn correlates with a decreasing crustal thickness that can be observed today. Hydrogen and oxygen isotopic compositions of the related hydrothermal systems show a concomitant

\* Corresponding author. Tel.: +359 2 979 2240; fax: +359 2 72 46 38.

E-mail addresses: [pmarchev@geology.bas.bg](mailto:pmarchev@geology.bas.bg), [pmarchev@yahoo.com](mailto:pmarchev@yahoo.com) (P. Marchev).

increase of magmatic relative to meteoric fluids, from the Pb–Zn–Ag deposits of the Central Rhodopes to the magmatic rock-hosted polymetallic gold deposits of the Eastern Rhodopes.

© 2005 Elsevier B.V. All rights reserved.

*Keywords:* Late orogenic extension; Metamorphic core complex; Hydrothermal ore deposits; Detachment fault; Magmatism; Ada Tepe; Madan; Rhodope Massif; Bulgaria; Greece

## 1. Introduction

For half a century, hydrothermal Pb–Zn vein and metasomatic replacement deposits in the Rhodope Massif have been the most important source of base metals in Bulgaria. They include the well-known Madan ore field, as well as the Madjarovo, Spahievo, and Zvezdel ore fields. Because of changes in the Bulgarian economy, mining operations for base metals in most of these deposits have been reduced or abandoned in recent years. A growing interest in precious metals, however, brought international exploration companies to the region and caused a change in exploration strategy, targeting the Au potential that is evident from old workings dating back to Thracian and Roman times. The most important exploration targets today are the upper parts of volcanic-hosted polymetallic epithermal systems of intermediate-sulphidation type (e.g., Chala and Madjarovo) and a new type of low-sulphidation Au systems hosted by clastic continental sediments (e.g., Ada Tepe, Stremtsi and Rosino). Successful exploration in the Greek part of the Eastern Rhodopes led to the discovery of high-sulphidation gold deposits at Perama Hill and Sappes (Michael et al., 1995; McAlister et al., 1999).

The Rhodope Massif in southern Bulgaria and northern Greece shares virtually all of the major elements of the global-scale collision zone of the Alpine–Himalayan orogenic belt. A Middle Cretaceous to Early Tertiary history of compressional deformation and crustal shortening led to high-grade and locally high-pressure regional metamorphism as well as calc-alkaline plutonism in a major accretionary complex (Ivanov, 1989; Burg et al., 1990, 1995, 1996; Ricou et al., 1998). Crustal thickening was accompanied and followed by protracted extension, mainly of Oligocene age in the Rhodope Massif (Ivanov et al., 2000). There, extension was initiated by low-angle detach-

ment faults, followed by block faulting, sedimentary basin formation, exhumation of high-grade metamorphic cores, extensive magmatism and erosion. Hydrothermal base- and precious-metal deposits were formed during these later stages of the orogenic collapse (Singer and Marchev, 2000; Marchev and Singer, 2002; Kaiser-Rohrmeier et al., 2004), similar to other parts of the Alpine–Balkan–Carpathian–Dinaride metallogenic belt (Mitchell, 1992, 1996; Mitchell and Carlie, 1994) and to some polymetallic ore districts in Canada and the western USA (Spencer and Welty, 1986; Berger and Henley, 1990; Beaudoin et al., 1991, 1992; John, 2001).

Because of its good exposure and comparatively well-studied tectonic and magmatic evolution, the Rhodope region was chosen for an international collaborative study within the Alpine–Balkan–Carpathian–Dinaride project of the Geodynamics and Ore Deposit Evolution programme of the European Science Foundation (ABCD–GEODE; Blundell et al., 2002; Heinrich and Neubauer, 2002; Lips, 2002). One aspect of this project was aimed at determining the critical mechanisms responsible for mineralization in environments of late orogenic collapse, high-grade metamorphism, extension and uplift. The Rhodope Massif is suitable for a regional study of ore formation in such a tectonic setting, allowing us to document the interplay between extensional-tectonic, magmatic and hydrothermal events in the late stages of an evolving orogen. This paper integrates new results of several subprojects and Ph.D. studies completed during the GEODE programme with previous data on Tertiary magmatism, tectonics and mineralization of the Rhodope region. Emphasis is placed on comparing the tectonic and volcanic setting of hydrothermal deposits, the space and time relationships between deformation, magmatism and ore deposition, and the likely sources of magmas and ore fluids based on isotopic data.

## 2. Geological overview

### 2.1. Geotectonic setting

The Rhodope and the Serbo-Macedonian Massifs are situated in southern Bulgaria, northern Greece and eastern Macedonia (Fig. 1). There, gneisses and granites prevail, which traditionally have been thought to represent a stable continental block of Variscan (Early Palaeozoic) or even of Precambrian age, which was preserved between the Srednogorie Zone and the Dinaride–Hellenide Belt of the Alpine–Himalayan orogenic system (Kober, 1928; Bonchev, 1971, 1988; Fig. 1). However, modern structural geology and geochronology has shown that the Rhodope and the Serbo-Macedonian Massif (Jones et al., 1992; Dinter and Royden, 1993) are a product of Alpine convergence between Africa and Europe and of consequent Cretaceous to Tertiary metamorphism and magmatism (Burchfiel, 1980; Ivanov, 1989; Burg et al., 1990, 1995, 1996; Jones et al., 1992; Ricou et

al., 1998; Lips et al., 2000). Today, the Rhodope Massif is interpreted as one element within a larger-scale geodynamic history of dominantly south-vergent thrusting and north-dipping subduction accompanied by back-arc extension, which generally migrated southward from the Late Cretaceous to the present time (see also von Quadt et al., 2005, this volume). In the Rhodope Massif, the history of Alpine convergence was initiated by an inferred north-dipping subduction zone, which gave rise to Late Cretaceous calc-alkaline arc magmatism and porphyry Cu–Au and high-sulphidation epithermal Au–Cu mineralization in the Srednogorie Zone of central Bulgaria and eastern Serbia (Moritz et al., 2003; Peytcheva et al., 2003; von Quadt et al., 2003). From the Tertiary to the present time, plate convergence moved southward and evolved into extensional opening of the Aegean Sea as a back-arc basin; during Miocene to recent times, subduction of the eastern Mediterranean Sea plate has formed the presently active Hellenic Arc.

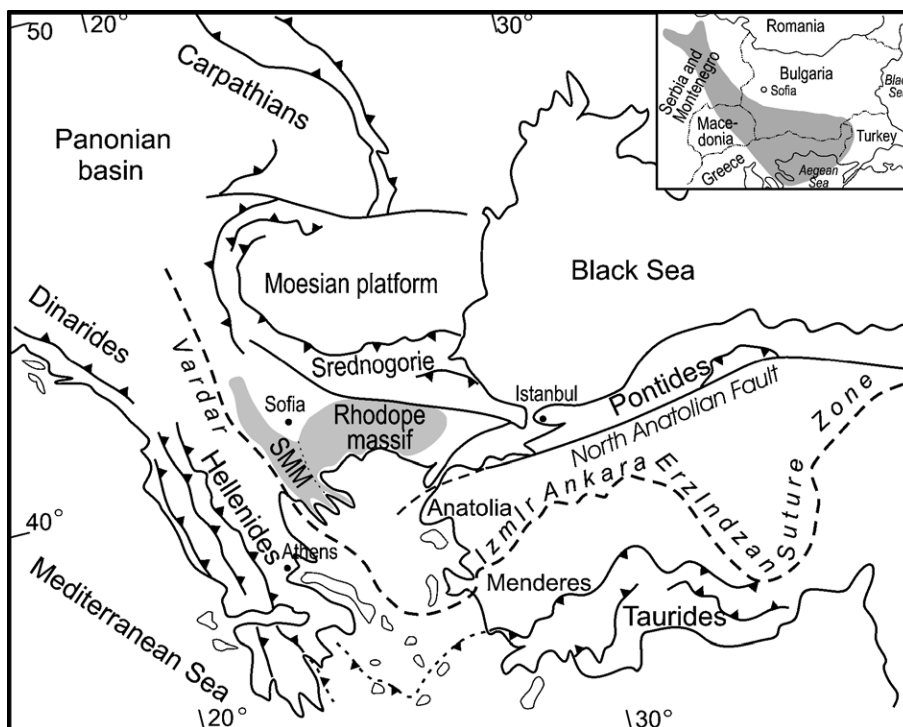


Fig. 1. The position of the Rhodope Massif with respect to the main tectonic units of south-eastern Europe. SMM=Serbo-Macedonian Massif. Shaded area in the inset shows distribution of Eocene to Oligocene magmatic rocks.

## 2.2. Tectonostratigraphic units of high-grade metamorphic rocks of the Rhodope Massif

The Rhodope Massif represents a large accretionary orogen that formed between the Srednogorie zone (underlain by European continental basement) and the present Aegean Sea. Complex nappe tectonics and crustal thickening resulted from accretion of dominantly continental crustal material followed by

polyphase regional metamorphism and final structuring by major low-angle extensional faults. Metamorphism is dominantly of amphibolite-facies, with incipient migmatization in some areas, and local relics of high to ultra-high pressure eclogite facies metamorphism. A full structural and kinematic reconstruction has not yet been published. In the simplified map shown in Fig. 2, two major tectonostratigraphic complexes, the Gneiss–Migmatite Complex and the

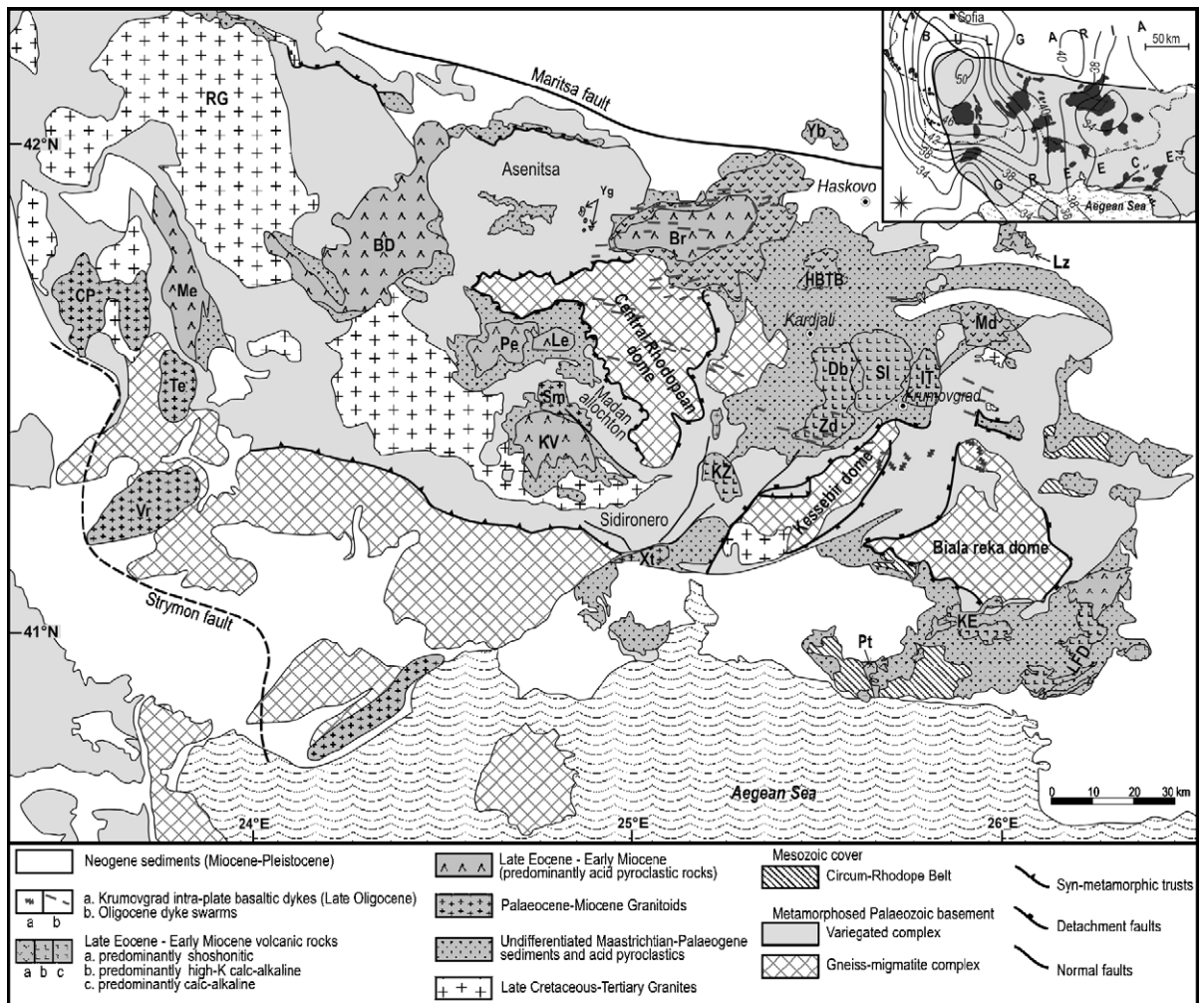


Fig. 2. Schematic geological map of the Rhodope Massif showing the metamorphic dome structures and major intrusive and volcanic areas and dyke swarms. BD=Bratsigovo–Dospat; Br=Borovitsa; Db=Dambaluk; HBTB=High-Ba trachybasalts; IT=Iran Tepe; KE=Kirki–Esimi; KV=Kotili–Vitinia; KZ=Kaloticho–Zlatograd; Le=Levochevo; LFD=Loutros–Fere–Dadia; LZ=Lozen; Me=Mesta; Md=Madjarovo; Pe=Perelic; Pt=Petra; SI=Sveti Ilija; Zd=Zvezdel; Yb=Yabalkovo. Plutons: CP=Central Pirin; RG=Rila granite; Sm=Smilian; Te=Te-shevo; Vr=Vrondou; Xt=Xanthi; Yg=Yugovo. Compiled from Ricou et al. (1998), Arikas and Voudouris (1998), Harkovska et al. (1998a), Marchev et al. (1998a, b, and unpubl. data), Nedialkov and Pe-Piper (1998), Yanev et al. (1998a) and 1:100000 map of Bulgaria. Inset shows distribution of Palaeogene intrusive and volcanic rocks and contours of crustal thickness taken from Shanov and Kostadinov (1992).



Variegated Complex, have been mapped mainly on the basis of dominant metamorphic rock composition. These units are separated, at least locally, by their degree of metamorphism and/or by mappable low-angle detachment faults, and thus they approximate the lower and upper plates of interpreted extensional core complexes (Wernicke, 1981).

The *Gneiss–Migmatite Complex* (Kozhoukharov et al., 1988; Haydoutov et al., 2001) corresponds to the Continental Unit of Ricou et al. (1998). It represents the tectonostratigraphically lower unit in extensional domes, and is sometimes bound on its top by mappable detachment faults. The main examples include the cores of the Central Rhodopean Dome in the Madan region, of the Kessebir and Biala Reka metamorphic domes in the Eastern Rhodopes (Burg et al., 1996; Ricou et al., 1998; Bonev, 2002) and the Kardamos and Kechros complexes in Greece (Mposkos and Krohe, 2000; Krohe and Mposkos, 2002; Fig. 2). The Sidironero complex has been correlated by Mposkos and Krohe (2000) with the lower unit of Papanikolaou and Panagopoulos (1981) and by Liati and Gebauer (1999) with the upper unit. The Gneiss–Migmatite Complex is dominated by orthogneisses and is characterized by widespread evidence of incipient melting, with subordinate paragneisses, marbles and amphibolites located mainly in its upper parts. Partially amphibolitized eclogites have been described within the Kechros and Sidironero complexes in Greece (Liati and Seidel, 1996; Mposkos and Krohe, 2000). Eclogite relicts also define an earlier tectonic thrust zone within the core of Central Rhodopean Dome (Kolčeva et al., 1986). The U–Pb age of zircons (Peytcheva and von Quadt, 1995; Arkadakskiy et al., 2000; Ovtcharova et al., 2003; Carrigan et al., 2003) and Rb–Sr ages from metagranites and pegmatites (Peytcheva et al., 1992, 1998b; Mposkos and Wawrzynitz, 1995) of the Gneiss–Migmatite Complex yield Hercynian ages (~335 to 300 Ma). Recent studies by Liati and Gebauer (2001) and Carrigan et al. (2003) report even older ages (3230 to 1600 and 2500 to 660 Ma) for a few inherited zircon cores in the area north of Xanthi and in Biala Reka metagranites. These ages show that the Gneiss–Migmatite Complex is derived mainly from a Variscan or an older continental basement.

The *Variegated Complex* (Kozhoukharov et al., 1988; Haydoutov et al., 2001) corresponds to the

Mixed Unit of Ricou et al. (1998) and the Kimi Complex in Greece (Mposkos and Krohe, 2000; Krohe and Mposkos, 2002). It is dominated by generally non-migmatized gneisses, amphibolites and abundant marbles. The age of sedimentation is unknown but may be Mesozoic (e.g., in the Ase-nitsa unit; Ivanov et al., 2000). In the Eastern Rhodopes, the Variegated Complex consists of a heterogeneous assemblage of metasedimentary rocks and ophiolite bodies (Kozhoukharova, 1984; Kolčeva and Eskenazy, 1988; Haydoutov et al., 2001). Peridotites and eclogites are intruded by gabbros, gabbro-norites, plagiogranites and diorites of boninite and arc-tholeiitic affinities, followed by an amphibolite-facies metamorphic overprint. SHRIMP dating of zircons from a gabbro in the Variegated Complex overlying the Biala Reka dome shows Neoproterozoic cores (570 Ma) overgrown by Variscan rims (~300 to 350 Ma; Carrigan et al., 2003), implying that these rocks, and perhaps even their amphibolite-facies metamorphism, are of Pre-Alpine age. In the Eastern Rhodopes, the Variegated Complex is tectonically overlain by phyllites, albite gneisses, marbles and greenschist-facies metamorphosed mafic and ultramafic igneous rocks of Jurassic to Early Cretaceous age. These rocks traditionally have been described as part of the Circum-Rhodope Belt (Jaranov, 1960; Kockel et al., 1976; Fig. 2), but Ricou et al. (1998) recommend that this term be discarded.

Crustal thickness beneath the Rhodope Massif (Fig. 2, inset) has been examined by geophysical studies (Dachev and Volvovsky, 1985; Shanov and Kostadinov, 1992; Boykova, 1999; Papazachos and Skordilis, 1998). Seismic data by the latter authors indicate a crustal thickness of >50 km in the Northwestern Rhodopes (i.e., below the Rila Granite), decreasing to ca. 25 km under the dome structures of the Central and Southeastern Rhodopes, and thickening again to 32 to 35 km in the Northeastern Rhodopes, where the Variegated Complex disappears beneath Neogene sediments of the Thracian Basin (Ivanov and Kopp, 1969).

### 2.3. *Alpine tectonic history of the Rhodope Massif*

Ivanov (1989) and Burg et al. (1990) were the first to recognize two major phases or deformation styles

within the Rhodope Massif (see also Ivanov et al., 2000). The first compressional stage, with large-scale south-vergent thrusting and amphibolite-facies metamorphism, was suggested to have culminated during the Middle Cretaceous (110 to 90 Ma; Zagortchev and Moor bath, 1986). The subsequent extensional phase involved exhumation of the thrust complex and formation of brittle–ductile detachment and synthetic faults. It was proposed to have been initiated in the Late Cretaceous by the emplacement of weakly deformed granitoid bodies dated at ca. 80 Ma (Peytcheva et al., 1998a), and then continued with the formation of Early Tertiary graben structures filled with continental sediments and volcanic rocks.

Recent geochronological results indicate a more complicated and even longer tectono-metamorphic evolution, with overlapping periods of accretion and dilation (Ricou et al., 1998). They suggest a different geological evolution of the Central and Eastern Rhodopes with subduction and metamorphism in the Central Rhodopes in Jurassic times (185 to 140 Ma; Reischmann and Kostopoulos, 2002) and similar events in the Eastern Rhodopes in Early Cretaceous to Early Palaeocene times (120 to 62 Ma; Wawrzenitz and Mposkos, 1997; Mposkos and Krohe, 2000; Liati et al., 2002).

The onset of an extensional stage, as originally suggested by Ivanov (1989) for the Central Rhodopes, seems to have occurred in the Late Cretaceous to Early Palaeocene. It is marked by the metamorphism in the Kimi complex (73 to 62 Ma; Liati et al., 2002) and emplacement of a series of granitoids at the Biala Reka Dome and in the Rila area (~70 Ma; Marchev et al., 2004a; I. Peytcheva, pers. comm., 2003) and undeformed metamorphic pegmatites (65 Ma; Mposkos and Wawrzenitz, 1995). This magmatism was interpreted by Marchev et al. (2004a) as the southernmost continuation of calc-alkaline magmatism in the Srednogorie Zone, which was followed by series of granitoids of Early Eocene age (52 to 42 Ma; Ovtcharova et al., 2003). The ages of these granites, intruding what is interpreted as the upper plate of the Central Rhodopean Dome, coincide with SHRIMP ages of inferred metamorphic zircon growth in eclogites and orthogneisses obtained by Liati and Gebauer (1999) of the Sidironero complex near Thermes. This suggests that mid-crustal granite intrusion and mantle to lower-

crustal metamorphism both occurred at the same time, prior to the extensional development of the core complex.

Extension along continuously mappable low-angle detachment faults formed the Central Rhodopean, Biala Reka and Kessebir metamorphic core complexes (Burg et al., 1996; Mposkos and Krohe, 2000; Ivanov et al., 2000; Krohe and Mposkos, 2002; Bonev, 2002), and led to the formation of sedimentary basins. Several unconformities developed during syntectonic continental and marine sedimentation (Boyanov and Goranov, 2001) and exhumation of UHP metamorphic lithologies. In the area north of the Kessebir dome structure, continental clastic sedimentation started in Maastrichtian–Palaeocene time (Goranov and Atanasov, 1992; Boyanov and Goranov, 1994, 2001), which is coeval with, or slightly later than, Late Cretaceous metamorphism and granitoid magmatism. Rb–Sr mineral isochrons (Peytcheva et al., 1992; Peytcheva, 1997; Wawrzenitz and Mposkos, 1997) and  $^{40}\text{Ar}/^{39}\text{Ar}$  dating of muscovite, amphibole and biotite (Lips et al., 2000; Mukasa et al., 2003; Bonev et al., in press) from the Variegated and Gneiss–Migmatite complexes fall in the range 42 to 35 Ma, suggesting that they represent the latest episodes of uplift and cooling below the closure of these isotopic systems (~350°C). Similar ages, from Rb–Sr mineral isochrons of gneisses, constrain the extension and uplift of the Central Rhodopean Dome near Madan (Kaiser-Rohrmeier et al., 2004).

### 3. Distribution and compositional variation of Tertiary magmatism

Throughout the Rhodope Massif, the latest stages of extension are manifest by the development of Late Eocene to Oligocene sedimentary basins, followed by widespread Late Eocene to Early Miocene magmatism. Extensive volcanic and plutonic rocks, typically truncating the detachment faults in the Rhodope Massif, form part of an arcuate belt, 500 km long and 130 to 180 km wide (Fig. 2), that is known as the Macedonian–Rhodope–North-Aegean Magmatic Belt (Harkovska et al., 1989; Marchev et al., 1989; Marchev and Shanov, 1991). This zone extends to the NW into the Dinarides of Macedonia and Serbia (Bonchev,

1980; Cvetkovic et al., 1995), and also continues to the SE through the Thracian Basin into Western Turkey (Anatolia; Yilmaz and Polat, 1998; Aldanmaz et al., 2000). K–Ar dating of the volcanic rocks in the northern Dinarides (Pamić et al., 2000) suggests that this volcanism extends even further to the NW and may be connected with the Periadriatic tonalite suite (von Blanckenburg et al., 1998) and dyke swarms in the NW Alps (Venturelli et al., 1984; von Blanckenburg and Davies, 1995). This large magmatic belt, with associated hydrothermal ore deposits, extends across the boundaries of major Alpine tectonic units in southeastern Europe, such as the Vardar ophiolite zone, representing one of the major sutures of the former Tethys Ocean (Fig. 1). The magmatic belt is probably related to a lithosphere-scale low-velocity anomaly that has been identified by mantle tomography and may have been caused by late orogenic slab break-off (de Boorder et al., 1998).

Syn- to post-extensional Eocene to Oligocene igneous rocks of the Rhodope Massif (Figs. 2 and 3) can be subdivided into two zones separated approximately along the 25°E meridian: (1) the Central Rhodope Magmatic Zone and (2) the Eastern Rhodope Magmatic Zone (Harkovska et al., 1989; Marchev et al., 1989). A change in the present-day crustal thickness from west to east correlates with the varying composition of the igneous rocks (Marchev et al., 1989, 1994; Marchev and Shanov, 1991).

### 3.1. *Igneous rocks of the Central Rhodope Magmatic Zone*

Tertiary magmatic activity on the Bulgarian side of the western and the central Rhodopes, referred to as to the Central Rhodope Magmatic Zone, is located on tectonically thickened crust (42 to 50 km). It is represented by five volcanic centres (Mesta, Bratsigovo–Dospat, Perelic, Levocevo and Kotili–Vitinya) and two large plutons (Central Pirin and Teshevo) of predominantly acid composition (Fig. 2; Katskov, 1981; Eleftheriadis and Lippolt, 1984; Zagortchev et al., 1987; Harkovska et al., 1998a and references therein; Machev and Rashkova, 2000, Machev et al., 2000). On Greek territory, the Vrontou pluton has been described by Kolocotroni and Dixon (1991) and Soldatos et al. (1998). Available K–Ar and

Rb–Sr ages (Table 1) indicate that magmatism was active between 34 and 25 Ma. More precise U–Pb zircon data, where available, are similar to those obtained by K–Ar method. The Mesta volcanic rocks are associated with the contemporaneous Teshevo and Central Pirin granites to granodiorites (Arnaudov and Arnaudova, 1982; Zagortchev et al., 1987; Harkovska et al., 1998a). Age determinations of the Vrontou pluton suggest that it consists of Oligocene and Miocene intrusions (see references in Magganis et al., 2004).

The Mesta lavas and associated pyroclastic rocks are of rhyodacitic to dacitic composition, whereas rocks comprising the Bratsigovo–Dospat, Perelic and Kotili–Vitinya volcanic areas are petrographically similar rhyodacite to rhyolite air-fall tuffs and strongly welded pumice-rich pyroclastic flows (Katskov, 1981; Eleftheriadis, 1995; Harkovska et al., 1998a). The Levochevo caldera, to the east of Perelic area, is filled with rhyolitic air-fall tuffs and non-welded to slightly welded pyroclastic flows. This explosive activity was followed by intrusion of dykes and subvolcanic bodies of latitic to high-K andesitic composition and late rhyolites (Harkovska et al., 1998a).

### 3.2. *Igneous rocks of the Eastern Rhodope Magmatic Zone*

The Eastern Rhodopes are underlain by progressively thinner (25 to 35 km) crust and expose a greater proportion of extrusive volcanic centres, which have a more variable magmatic composition (Figs. 2 and 3). Small intrusive bodies of gabbro, monzonite and syenite intrude the volcanic centres and metamorphic basement rocks, the largest of them being the Xanthi pluton (Kyriakopoulos, 1987; Del Moro et al., 1988; Mavroudchiev et al., 1993; Christofides et al., 1998). The igneous rocks represent calc-alkaline, high-K calc-alkaline and shoshonitic magmas, including basalts, andesites, dacites, and rhyolites and their intrusive equivalents (Ivanov, 1963, 1964, 1968; Innocenti et al., 1984; Harkovska et al., 1989; Yanev et al., 1989, 1998a; Marchev and Shanov, 1991; Eleftheriadis, 1995; Marchev et al., 1998a, 2004a; Arikas and Voudouris, 1998), and they show a general south to north enrichment in K<sub>2</sub>O (Fig. 4). Shoshonitic rocks in the Borovitsa volcanic area are accompanied by

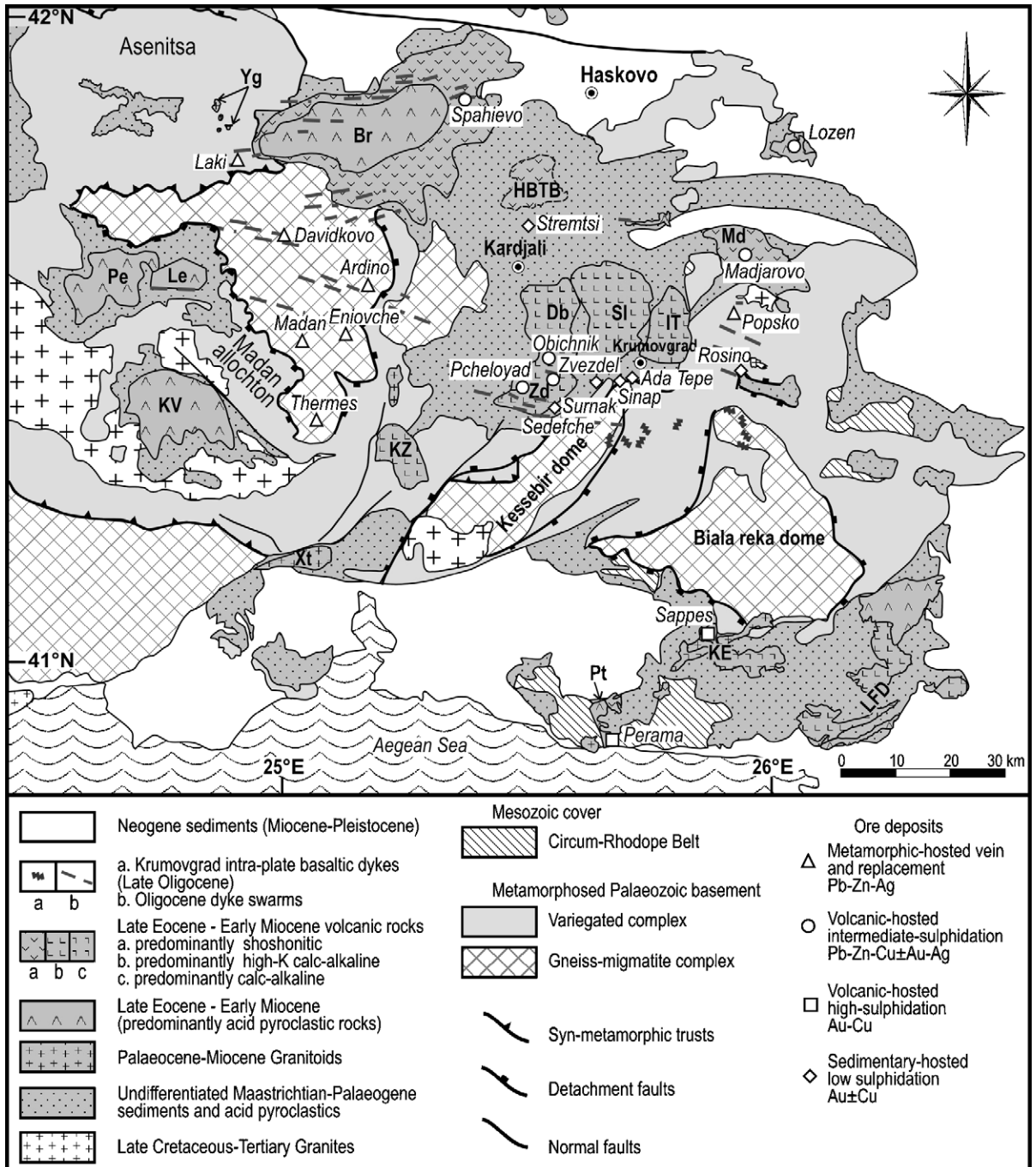


Fig. 3. Schematic geological map of the Central and Eastern Rhodopes showing locations of hydrothermal ore districts, deposits and occurrences included in this study. Abbreviations as in Fig. 2.



Table 1  
Summary of K–Ar,  $^{40}\text{Ar}/^{39}\text{Ar}$ , Rb–Sr and U–Pb data for Palaeogene igneous rocks of the Rhodope Massif

	Rb–Sr	K–Ar	$^{40}\text{Ar}/^{39}\text{Ar}$	U–Pb
<i>Eastern Rhodope</i>				
Yabalkovo		39.10 ± 1.52 35.79 ± 1.41		Yanev et al., 1998b
High-Ba trachybasalts		33.1 ± 1.3 29.2 ± 1.1		Marchev et al., 2004a
Iran Tepe		36.5 to 35.0		Lilov et al., 1987
Lozen		36.5 to 35.0		Lilov et al., 1987
Madjarovo	32.3 ± 0.6 31.6 ± 1.2	33.5 to 31.0	32.69 ± 0.21 32.06 ± 0.13	Lilov et al., 1987; Marchev and Rogers, 1998; Marchev and Singer, 2002
Borovitsa		35.36 ± 1.33 30.63 ± 1.71	32.99 ± 0.38 31.75 ± 0.32	Pěcskay, pers. comm.; Singer and Marchev, 2000
Zvezdel			31.93 ± 0.50 31.13 ± 0.06	Singer and Marchev, 2000; Marchev and Singer, unpubl. data
Sveti Iliya		35.0 to 31.0		Lilov et al., 1987; Georgiev et al., 2003
Dambalak		31.0 to 29.3		Georgiev et al., 2003
Kaloticho–Zlatograd		35 ± 1.2 23.7 ± 1.7		Eleftheriadis and Lippolt, 1984
Kirki–Esimi		33.0 to 21.9		Pěcskay et al., 2003
Loutros-Fere-Dadia		33.3 to 19.5		Pěcskay et al., 2003
Petrota		30.3 to 27.2		Pěcskay et al., 2003
Krumovgrad intra-plate basalts		27.9 ± 0.8 26.1 ± 1.7		Marchev et al., 1998b
<i>Central Rhodopes</i>				
Mesta		33.4 ± 1.6 28.2 ± 1.0		Pěcskay et al., 2000
Bratsigovo–Dospat		34 ± 3		Palshin et al., 1974
Perelic		32.9 ± 1.2 29.0 ± 1.2		Pěcskay et al., 1991; Ovtcharova et al., unpubl.
Levochevo		33.4 ± 1.4 30.2 ± 1.3		32.58 ± 0.33 Harkovska et al., 1998a; Ovtcharova et al., unpublished
Kotili–Vitinia		30.6 to 24.6		30.78 ± 0.14 Innocenti et al., 1984; Eleftheriadis and Lippolt, 1984;
Central Pirin	32 to 34 ± 2			Ovtcharova et al., unpubl.
Teshovo	32.6 ± 0.61			Zagortchev et al., 1987
Vrondou (NE part)		34 ± 2 29 ± 1		Marchev et al., 2000 Marakis, 1969
Vrondou (SW part)			23.6 to 23.7 ± 0.5	Magganas et al., 2004

rare ultrapotassic varieties (Yanev and Pěcskay, 1997; Marchev et al., 1998a). Volcanic activity of the Petrota graben in Greece falls off this general potassium trend, consisting of early shoshonitic andesites and dacites, followed by late high-K calc-alkaline ande-

sites (Arikas and Voudouris, 1998; Marchev et al. unpubl. data, 2002; Fig. 4). Extensive pyroclastic flows serve as stratigraphic markers in the Eastern Rhodopes. One pyroclastic eruption led to the formation of the large Borovitsa caldera (30 × 15 km; Iva-

nov, 1972; (Figs. 2, 3, and 5)). Dykes of intraplate alkaline basalts and lamprophyres are described in the Biala Reka and Kessebir metamorphic domes (Mavroudchiev, 1964; Marchev et al., 1998b). Their primitive character along with abundant lherzolite xenolith fragments and high-pressure pheno- and megacrysts require derivation from mantle depths.

K–Ar age determination of the igneous rocks in the Eastern Rhodopes (Table 1) indicate that magmatism was active between 39 and 25 Ma, with the younger activity generally prevailing in the south (Eleftheriadis and Lippolt, 1984; Lilov et al., 1987; Marchev et al., 1998a; Yanev et al., 1998b). Precise  $^{40}\text{Ar}/^{39}\text{Ar}$  ages demonstrate a shorter life span in several volcanic centres (e.g.,  $\leq 1$  Ma at Madjarovo; Marchev and Singer, 2002; Marchev et al., 2004a). In the Greek part of the Eastern Rhodopes, an Oligocene igneous complex with volcanic rocks and coeval granitoid intrusions

(35 to 28 Ma; Del Moro et al., 1988) is overlain by Lower Miocene volcanism (22 to 19.5 Ma; Pěcský et al., 2003).

### 3.3. Petrography and elemental and isotope geochemistry

The shoshonitic rocks are characterized by plagioclase rimmed with sanidine (e.g., Mackenzie and Chappel, 1972), accompanied by water-bearing phenocrysts (biotite  $\pm$  hornblende), clinopyroxene and orthopyroxene. Mafic varieties have olivine or high-F phlogopite and pheno- or microphenocrystal apatite. Acid rocks consist of plagioclase, sanidine, clinopyroxene, biotite  $\pm$  amphibole, accompanied by quartz in rhyolites. Titanomagnetite is a ubiquitous phenocryst phase, whereas ilmenite is absent in the mafic and intermediate rocks and very rare in the acid varieties. In all shoshonites, the ratio

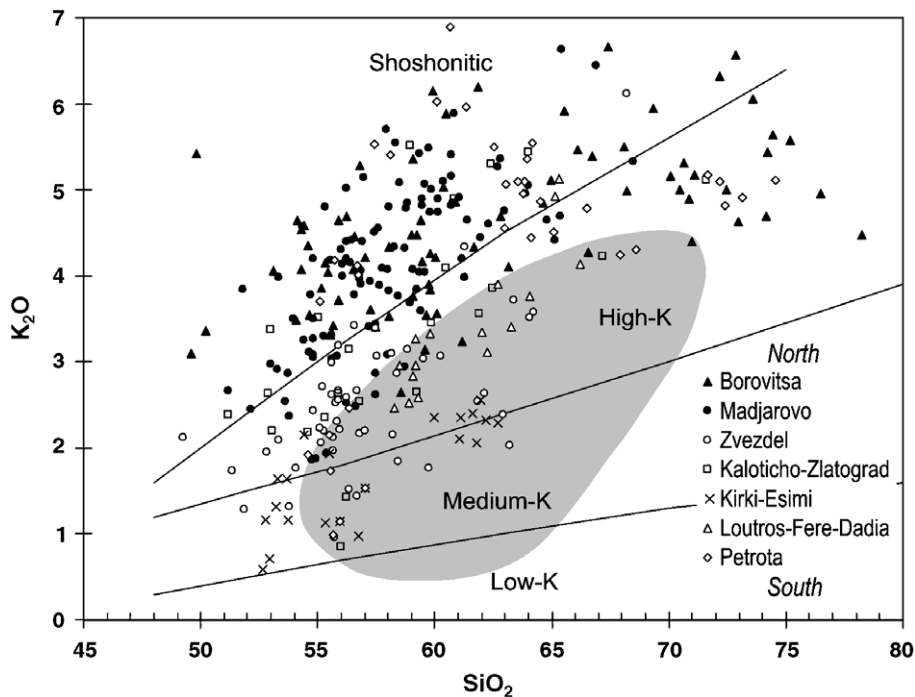


Fig. 4.  $\text{K}_2\text{O}$  versus  $\text{SiO}_2$  plot for Tertiary igneous rocks from the Eastern Rhodope Magmatic Zone. Data from Arikas and Voudouris (1998), Eleftheriadis (1995), Innocenti et al. (1984), Nedialkov and Pe-Piper (1998); Marchev et al. (1998a, b and unpubl. data). Note the general decrease of  $\text{K}_2\text{O}$  contents from north to south, which corresponds to the spatial association of the shoshonites with intermediate-sulphidation mineralization and calc-alkaline and high-K calc-alkaline rocks with high-sulphidation deposits. Shoshonites from Petrota graben are the only exception, but they are older than the calc-alkaline rocks that are believed to be associated with mineralization. Field for the rocks associated with high-sulphidation gold deposits from Arribas (1995) is shaded.

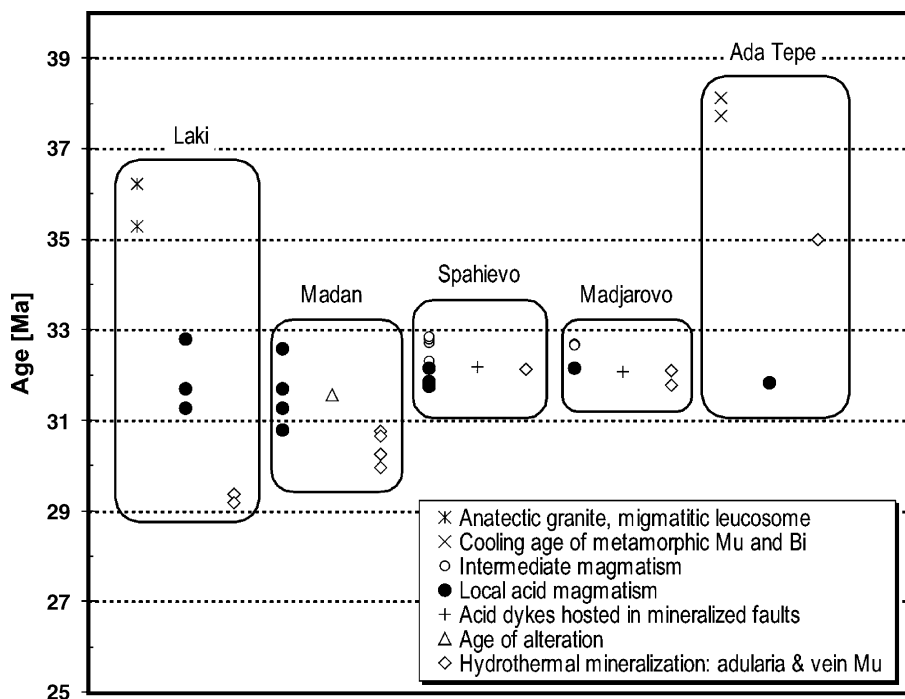


Fig. 5. Summary of high-precision age data for the ore mineralization in the Central and Eastern Rhodopes and the host rocks, based on published information (Peytcheva et al., 1993; Arkadaskiy et al., 2000; Singer and Marchev, 2000; Marchev and Singer, 2002; Ovtcharova et al., 2003; Marchev et al., 2004b; Kaiser-Rohrmeier et al., 2004). Note the indistinguishable ages of mineralization and silicic dykes emplaced in the same faults in Chala (Spahievo ore field) and Madjarovo.

$\text{Fe}_2\text{O}_3/\text{FeO}$  is very high, ranging from 0.76 to 0.85 in the freshest intermediate and mafic samples (Table 2). These characteristics show that shoshonitic magmas had high water content (>3 to 5 wt.%  $\text{H}_2\text{O}$ ) and crystallized at high oxygen fugacities (Carmichael, 1967; Burnham, 1979; Luhr, 1992; Candela, 1997).

Most calc-alkaline and high-K calc-alkaline rocks are strongly porphyritic. Plagioclase is the dominant phase in all rock types. In addition, basaltic andesites contain clino- and orthopyroxene, or olivine in basalts. Andesites have either ortho- and clinopyroxene or clinopyroxene + amphibole  $\pm$  biotite, which prevail in dacites and rhyodacites. Rhyolites contain plagioclase, sanidine, biotite  $\pm$  amphibole and quartz phenocrysts. Titanomagnetite is present in all rocks. Compared to shoshonites, fresh calc-alkaline rocks have a lower  $\text{Fe}_2\text{O}_3/\text{FeO}$  ratio (0.41 to 0.48; Table 2), reflecting more reduced compositions.

Magmatic rocks from the Central and Eastern Rhodopes differ significantly in Sr isotope composition

(Table 3) and show a strong dependence on crustal thickness (Marchev et al., 1989, 1994; Marchev and Shanov, 1991). Sr isotope ratios of Teshevo and Central Pirin granitoids and nearby coeval Mesta graben volcanic rocks are most radiogenic, and  $^{87}\text{Sr}/^{86}\text{Sr}$  gradually decreases to the south (Vrondou granitoids) and to the east-south-east (Bratsigovo–Dospat, Perelic and Kotili–Vitinia volcanic areas). Lavas from the Priabonian Iran Tepe volcano and the Eastern Rhodopes of Greece are the least radiogenic rocks with regard to their Sr isotope compositions, except for intraplate basalts at Krumovgrad.

Published Pb isotope data for the Rhodopean igneous rocks (Table 4) show a small range in  $^{206}\text{Pb}/^{204}\text{Pb}$ ,  $^{207}\text{Pb}/^{204}\text{Pb}$  and  $^{208}\text{Pb}/^{204}\text{Pb}$  values. Mafic rocks from the Eastern Rhodopes and Vrondou pluton (Juteau et al., 1986; Marchev et al., 2004a) have higher  $^{206}\text{Pb}/^{204}\text{Pb}$  ratios. High-Ba trachybasalts have slightly lower  $^{206}\text{Pb}/^{204}\text{Pb}$  but have much more radiogenic  $^{207}\text{Pb}/^{204}\text{Pb}$  and  $^{208}\text{Pb}/^{204}\text{Pb}$  ratios. Krumovgrad intraplate basalts differ from all other rocks

Table 2

Representative major element analyses of the freshest Rhodopean Palaeogene igneous rocks

	Shoshonitic rocks					High-K calc-alkaline rocks							
	Madjarovo			Borovitsa		Zvezdel			Kirki–Esimi–Petrota		Loutros–Fere–Dadia		Intraplate
	1	2	3	4	5	6	7	8	9	10	11	12	13
	M89–107	M89–202	M89–80a	8	Br97/2	2014	2230	27G	K.A.3	P.A.3	PL.A.3	LF.R.8	IEG–01
SiO <sub>2</sub>	51.21	58.26	65.14	60.34	78.24	51.35	54.70	64.08	55.51	55.56	59.04	75.45	46.44
TiO <sub>2</sub>	1.09	0.76	0.29	0.71	0.09	1.11	1.03	0.63	0.65	0.64	0.70	0.22	2.01
Al <sub>2</sub> O <sub>3</sub>	18.37	17.06	13.88	16.97	11.51	17.90	16.85	16.46	15.75	15.98	16.48	12.92	16.48
Fe <sub>2</sub> O <sub>3</sub>	3.11	2.73	1.49	1.72	0.24	2.74	3.56	1.95	2.50	2.58	1.87	0.57	
FeO	4.71	3.22	1.13	2.26	0.58	5.83	4.99	2.30	6.09	6.01	3.87	0.42	9.24
MnO	0.18	0.11	0.10	0.07	0.04	0.16	0.13	0.11	0.22	0.20	0.12	0.03	0.15
MgO	5.06	2.72	1.51	2.36	0.12	5.23	3.73	1.11	4.38	4.13	3.01	0.36	7.61
CaO	9.00	5.18	2.15	5.38	0.68	9.91	6.94	3.30	7.97	7.83	6.09	1.30	10.10
Na <sub>2</sub> O	3.06	3.22	3.30	4.10	2.85	2.66	3.11	4.78	2.26	2.38	3.17	2.76	2.11
K <sub>2</sub> O	2.66	4.34	4.41	3.93	4.48	1.74	2.21	3.51	1.94	1.73	2.84	4.98	2.30
P <sub>2</sub> O <sub>5</sub>	0.38	0.41	0.08	0.28	0.02	0.56	0.33	0.20	0.29	0.20	0.18	0.05	0.57
LOI	1.75	2.11	6.08	1.76	1.15	0.84	1.98	2.38	2.40	1.97	2.50	1.38	3.13
Total	100.58	100.12	99.56	99.88	100.00	100.00	99.72	100.81	99.96	99.21	99.87	100.44	100.14
Fe <sub>2</sub> O <sub>3</sub> /FeO	0.66	0.85	1.32	0.76	0.41	0.47	0.71	0.85	0.41	0.43	0.48	1.36	

Analyses (1 and 2, 4 to 8) by classic wet analyses; analysis 1 from Marchev et al. (1998a); analyses 9 to 12 from Arikas and Voudouris (1998). High LOI in sample 3 is due to the hydrated (perlitic) groundmass.

by higher <sup>206</sup>Pb/<sup>204</sup>Pb at lower <sup>207</sup>Pb/<sup>204</sup>Pb and <sup>208</sup>Pb/<sup>204</sup>Pb ratios.

Overall variations of the Sr and Pb isotopes in the calc-alkaline and shoshonitic rocks can be viewed as mixing between two broad end members — a low

<sup>87</sup>Sr/<sup>86</sup>Sr, high <sup>206</sup>Pb/<sup>204</sup>Pb, and low <sup>207</sup>Pb/<sup>204</sup>Pb source, similar to local asthenosphere, represented by the intraplate basalts; and a high <sup>87</sup>Sr/<sup>86</sup>Sr and <sup>207</sup>Pb/<sup>204</sup>Pb component, represented by the Palaeozoic or older basement rocks.

Table 3

Strontium isotope data from the Rhodope Massif igneous rocks

Locality	<sup>87</sup> Sr/ <sup>86</sup> Sr <sub>i</sub>	References
<i>Eastern Rhodopes</i>		
High-Ba trachybasalts	0.70688 to 0.70756	Marchev et al., 2004a
Borovitsa	0.70790 to 0.71199	Marchev et al., unpubl. data
Madjarovo	0.70775 to 0.70861	Marchev et al., 2002, unpubl. data
Zvezdel	0.70713 to 0.70737	Marchev et al., unpubl. data
Iran Tepe	0.70677 to 0.70745	Marchev et al., unpubl. data
Kaloticho–Zlatograd	0.70643 to 0.70713	Eleftheriadis, 1995
Kirki–Esimi, Petrota, Loutros–Fere–Dadia	0.7057 to 0.7080	Pěcskay et al., 2003
Krumovgrad intra-plate basalts	0.70323 to 0.70338	Marchev et al., 1998b
<i>Central Rhodopes</i>		
Mesta	0.71292 to 0.71296	Harkovska et al., 1998a
Bratsigovo–Dospat	0.70931	Harkovska et al., 1998a
Perelic	0.70929	Eleftheriadis, 1995
Levochevo	0.70900 to 0.70977	Harkovska et al., 1998a
Kotili–Vitinia	0.7077 to 0.70852	Innocenti et al., 1984; Eleftheriadis, 1995
Central Pirin	0.71303 to 0.71521	Harkovska et al., 1998a
Teshovo	0.71246 to 0.71263	Harkovska et al., 1998a
Vrondou	0.70520 to 0.70717	Christofides et al., 1998
Xanti	0.70452 to 0.70783	Christofides et al., 1998



Table 4  
Lead isotope ratios of igneous rocks from the Rhodope Massif

Locality	Number of analyses	$^{206}\text{Pb}/^{204}\text{Pb}$	$^{207}\text{Pb}/^{204}\text{Pb}$	$^{208}\text{Pb}/^{204}\text{Pb}$	References
<i>Eastern Rhodopes</i>					
Borovitsa	9	18.63 to 18.76	15.64 to 15.73	38.74 to 39.07	Marchev et al., unpubl.; Yanev, pers. comm.
Lozen	1	18.70	15.69	38.90	Amov et al., 1993
Madjarovo	6	18.68 to 18.80	15.65 to 15.68	38.72 to 38.83	Amov et al., 1993; Marchev et al., unpubl.
Zvezdel	2	18.72 to 18.73	15.65 to 15.68	38.75 to 38.90	Marchev et al., unpubl.
HBTB	2	18.72 to 18.73	15.74 to 15.76	39.07 to 39.14	Marchev et al., 2004a
Loutros–Fere–Dadia	2	18.86 to 18.92	15.69 to 15.74	39.01 to 39.12	Pe-Piper et al., 1998
<i>Central Rhodopes</i>					
Mesta	1	18.71	15.68	37.92	Amov et al., 1993
Bratsigovo–Dospat	1	18.67	15.65	38.88	Marchev et al., unpubl.
Perelic	1	18.67	15.68	38.92	Amov et al., 1993
Central Pirin	3	18.62 to 18.74	15.68 to 15.68	38.86 to 38.91	Amov et al., 1993
Teshevo	2	18.71 to 18.79	15.68 to 15.70	38.87 to 38.94	Amov et al., 1993
Vrondou	4	18.74 to 18.83	15.64 to 15.70	38.80 to 39.15	Juteau et al., 1986
Xanti	2	18.70 to 18.81	15.67 to 15.68	38.95 to 39.03	Pe-Piper et al., 1998

All samples are K feldspar except HBTB, Vrondou and Loutros-Fere-Dadia, which are from bulk rocks.

### 3.4. Dyke swarms, volcano structures and extension

Numerous dyke swarms, trending E–W to ESE–WNW, are typical throughout the Rhodope Massif (Ivanov, 1960, 1983). The precise age of these dyke swarms and their relationship to the volcanic structures are controversial. Most authors (Boyanov and Mavroudchiev, 1961; Mavroudchiev, 1965; Yanev et al., 1998a) believe that they formed after the end of the major extrusive volcanic activity, during Late Oligocene and even Miocene time. Other authors (Kostov, 1954; Ivanov, 1960, 1972, 1983) have suggested that dyke swarms trace the position of large faults that served as the feeders to more extensive extrusive and intrusive magma emplacement.

Dyke swarms are from 15 to 65 km long. In the Northern Rhodopes they strike dominantly E–W, whereas those in the south strike mostly WNW–ESE ( $90^\circ$  to  $115^\circ$ ). Most dykes formed from relatively uniform acid magmas, but some swarms have composite (basic–intermediate–acid) or bimodal (basalt–rhyolite) compositions. Dyke swarms are obvious in the eroded metamorphic dome structures at Madan, Biala Reka and Kessebir. Many of these dyke swarms can be traced to depressions or calderas containing extensive volcanic material or to elongated subvolcanic intrusions (e.g., Borovitsa caldera).

Their role as feeder dykes of lavas is supported at Borovitsa and Zvezdel also by the similarity of chemical compositions, K–Ar and  $^{40}\text{Ar}/^{39}\text{Ar}$  ages (Harkovska et al., 1998b; Singer and Marchev, 2000), and generally by the regional age trend of dyke swarms and volcanism, both younging from north to south.

### 3.5. Origin of the Rhodope magmas

The Rhodope magmatism has been interpreted as typically collisional and resulting from the convergence between Africa and Europe throughout the Tertiary (Yanev and Bakhneva, 1980; Innocenti et al., 1984; Marchev and Shanov, 1991; Yanev et al., 1998a). In an attempt to explain the high  $^{207}\text{Pb}/^{204}\text{Pb}$  ratios of the Oligocene–Miocene igneous rocks from the Greek part of the Rhodope Massif, Pe-Piper et al. (1998) suggested that they derived from melting of ancient enriched subcontinental lithospheric mantle. Francalanci et al. (1990), Nedialkov and Pe-Piper (1998) and Yanev et al. (1998a), following the model proposed by Foley et al. (1987), argue that the parental magmas have been generated from mantle sources, heterogeneously enriched by fluids and melts derived from previous subduction. However, this interpretation is at odds with the absence of

enriched or veined mantle xenoliths from the lithospheric mantle entrained in the late intraplate basalts (Marchev et al., 2004a). In the light of the geological setting and tectonic history summarized above, this late orogenic magmatism was more probably triggered by post-collisional extension (Christofides et al., 1998; Harkovska et al., 1998a; Marchev et al., 1998a, 2004a). The geochemical complexity of the late orogenic Rhodopean magmas can be ascribed to a combination of partial melting of an OIB-like enriched mantle, chemically and isotopically modified in the Rhodope metamorphic basement through the processes of crustal contamination, fractional crystallization, and magma-mixing (Marchev et al., 1989, 1994, 1998a, 2004a; Harkovska et al., 1998a). The order of emplacement of the mafic rocks in the Eastern Rhodopes, from high-Ba trachybasalts, through shoshonites, calc-alkaline and high-K calc-alkaline basalts, to purely asthenosphere-derived alkaline basalts, with a progressive decrease in the crustal component, has been interpreted to reflect upwelling asthenospheric mantle as the result of convective removal of the lithosphere by a mantle diapir. This explains the surprising similarity with processes of extension and magma evolution in the Western U.S. Cordillera and in the Menderes Massif in SW Turkey (Marchev et al., 2004a).

#### 4. Hydrothermal base and precious metal deposits

The Rhodope Massif, like the entire Macedonian–Rhodope–North-Aegean Magmatic Belt, is characterized by numerous small to moderate-sized polymetallic ore deposits of variable composition and ore type, some of which are grouped into ore districts of global significance (Stoyanov, 1979; Mitchell and Carlie, 1994; Mitchell, 1996). Major ore deposits are localized at the eastern part of the Central Rhodopes and are absent in the western part of the Central Rhodopes, which are characterized by few small Pb–Zn and Sb deposits (Dimitrov, 1988; Dokov et al., 1989). The distribution and key characteristics of four major ore types are summarized below, more detailed descriptions of two examples being presented in Box 2–1 (Vassileva et al., 2005, this volume) and Box 2–2 (Marchev et al., 2005, this volume).

##### 4.1. Metamorphic-hosted vein and replacement Pb–Zn–Ag deposits

Historically the most significant ore deposits in Bulgaria are Pb–Zn-dominated veins and marble-replacement bodies hosted by basement metamorphic rocks in the roof of large extensional domes. They are also associated with silicic dyke swarms, and their precise temporal and genetic relation to core complex formation and acid magmatism are a subject of recent study (Kaiser-Rohrmeier et al., 2004).

*Ore fields associated with the Central Rhodopean Dome* include Madan, Laki, Davidkovo, Eniovche and Ardino in Bulgaria, and Thermes as a continuation of the Madan ore field in Greece (Fig. 3, Box 2–1; Vassileva et al., 2005, this volume). Together, these comprise about 70 individual deposits. In total, ca. 114 Mt of Pb–Zn ore was processed from all ore fields between 1941 and 1995 (Table 5, Milev et al., 1996). Silver content in the ores varies between 12 and 53 g/t, except for higher values, up to 160 g/t, in the Ardino region. Presently, underground operations are active in the Laki and Madan ore fields.

The deposits comprise hydrothermal Pb–Zn veins, disseminated vein stockworks, and metasomatic replacements as the economically most important orebodies. All ore fields are spatially associated with the inferred detachment fault (Kaiser-Rohrmeier et al., 2004). The Madan ore field is located on the western slope of the dome, the Laki ore field on the northern slope and the Eniovche and Ardino deposits are located in the eastern periphery. Davidkovo is situated on the culmination of the dome less than a kilometre from the inferred but eroded hanging-wall detachment. There, the ore veins are hosted by homogenous gneisses and several marble horizons, as well as silicic dykes and volcanoclastic rocks. Mineralization is developed in stockworks and veins up to 3 m thick at the intersections of three NW-, E- and NE-trending fault structures in the footwall of the dome (Dragiev and Danchev, 1990; Ivanov et al., 2000). Veins invariably cut the detachment fault, and mineralization locally extends into overlying conglomerates of extensional basins. In the Madan ore field (Box 2–1; Vassileva et al., 2005, this volume), the deposits are closely related to six major subparallel NNW-trending faults, the most extensively developed mineralization being controlled by the intersection with WNW-trend-

ing faults (Kolkovski et al., 1996; Ivanov et al., 2000). Mineralization at the Laki ore field is controlled by four linear NNE-striking fault zones, the easternmost veins being located in or close to the western ring-fault of the Borovitsa caldera. Ore mineralization at Eniovche is localized along WNW-trending fault structures. The Davidkovo ore field (Figs. 2 and 3) consists of 10 prospects and several occurrences, veins and stockworks occurring at the intersections of three NW-, E- and NE-trending fault structures in the lower plate of the dome (Naphtali and Malinov, 1988; Kolkovski and Dobrev, 2000). Metasomatic orebodies in all ore fields developed at the intersections of steep veins with several marble horizons that occur both in the upper and in the lower plate. Metasomatic replacement extends up to 20 to 30 m away from the veins (Kolkovski and Dobrev, 2000).

The main minerals in the ore fields of the Central Rhodopean Dome are quartz, galena, sphalerite, pyrite, arsenopyrite, chalcopyrite and carbonates, including calcite and rhodochrosite (Bonev, 1982, 1991; Kolkovski et al., 1996). Distal Mn-skarns developed at the contacts to marbles, consisting of manganian clinopyroxenes and rhodonite, were subsequently replaced by manganian hydrous silicates, carbonates and finally by sulphides closest to the feeder veins (Vassileva and Bonev, 2003; Box 2–1, Vassileva et al., 2005, this volume). Arsenic (mainly as arsenopyrite) is widespread at Madan but subordinate at Laki (Kolkovski and Dobrev, 2000). Maneva et al. (1996) described vertical zonation within the Madan veins, with an increase of galena, chalcopyrite and pyrite at depth, and a regional increase of galena/sphalerite ratio away from the Borovitsa caldera. A general zonation of trace elements has been suggested by Maneva et al. (1996) with an upper zone enriched in  $Ag \pm Te$  in the least eroded Davidkovo ore district (Marinova and Kolkovski, 1995), and an intermediate level with  $Ag \pm Sb$  and a lower level with  $Ag + Bi > Sb$  for the rest of ore districts. Alteration of gneiss and amphibolite wallrocks produced narrow haloes of quartz–sericite–carbonate–pyrite and chlorite–carbonate–epidote, respectively, as well as local silicification (Bonev, 1968; Tzvetanov, 1976; McCoyd, 1995).

Early fluid inclusion studies at Madan indicated an increase of temperature during ore deposition from 250 to 260 °C in the upper levels to 280 to 350 °C in the lower levels and 280 to 320 °C in the metasomatic

bodies (Kolkovski and Petrov, 1972; Kolkovski et al., 1978; Petrov, 1981; Strashimirov et al., 1985; Krasteva and Stoyanova, 1988; McCoyd, 1995; Christova, 1996). In a recent study of the Petrovitsa vein of the Madan ore field, Kostova et al. (2004) showed that precipitation within the vein structure was mainly the result of cooling from about 310 to 285 °C over the investigated 400 m vertical interval. McCoyd (1995) established a similar temperature interval from fluid inclusion studies in quartz from Laki ore field but Christova (1996) noted much lower minimal temperatures. The largest temperature interval for the productive paragenesis (200 to 345 °C) was measured for the Davidkovo ore field (Naphtali and Malinov, 1988).

The polymetallic vein deposits from Madan and Luki precipitated from a slightly acid fluid with range of salinities from 0.5 to 5 eq. wt.% NaCl. The Na:K:Ca ratio determined from primary fluid inclusions in galena from Madan is 11:2:1 (Piperov et al., 1977). A Pb content of about 7 to 8 ppm and a Zn content of ca. 33 ppm were established at the present-day+668 m level, which represents a palaeodepth of about 1200 m (Kostova et al., 2004).

The age of the mineralization in the Madan and Laki ore districts has been determined by Ar–Ar dating (Fig. 5) of white mica from ore veins and altered wall rocks (Kaiser-Rohrmeier et al., 2004). Ages obtained from hydrothermal vein muscovite at Laki (~29.3 Ma) and Madan (~30.4 Ma) indicate a small but significant age difference for mineralization in the two ore fields. Sericite from alteration haloes of quartz–sphalerite–galena veins of the Madan ore field displays ages around 31 Ma, consistent with the vein muscovite. Mineralization at Eniovche is coeval with that at Madan.

*Pb–Zn–Ag–Au veins in the Biala Reka Dome* define the Popsko ore field, which was extensively explored but never mined. The mineralization is in 3 vein swarms (Table 5) covering ca. 100 km<sup>2</sup> at the northern periphery of the dome. Veins are hosted partly by large rhyolitic dykes or stocks and partly by metamorphic rocks of the Variegated Complex. The ore mineralogy and metal components of the Popsko ore field are similar to those from the Central Rhodopes, except for the elevated contents of Cu and Au in the former. Unlike the predominantly sericitic alteration at the Central Rhodope ore fields, the alteration mineralogy at Popsko (Pljushev et al., 1995) is

Table 5  
Characteristics of hydrothermal ore deposits in the Eastern and Central Rhodopes

Group of hydrothermal ore deposits (mines)	Ore bodies; production, (reserves)	Host geology	Ore-related minerals	Wall-rock alteration	Age of alteration (Ma)	Ore fluid <i>T</i> (°C); salinity (eq. wt.% NaCl)	Composition and type of associated igneous rocks	Age of igneous rocks (Ma)	References
<i>Polymetallic (Pb–Zn–Ag) deposits</i>									
Madan ore field	Veins, stockwork, marble replacement in 6 NNW-trending faults; 95 Mt ore at 2.54% Pb and 2.10% Zn	Palaeozoic gneisses, amphibolite, mica schists, marbles, volcanic rocks	Quartz, galena, sphalerite, pyrite, arsenopyrite, chalcopyrite, pyrrhotite, tennantite–tetrahedrite, marcasite, cobaltite, scarce Ag–Bi sulphosalts calcite, rhodochrosite, barite	Chlorite–carbonate–epidote; quartz–sericite–carbonate–pyrite; local silicification	29.95 to 30.76	250 to 350; 0.5 to 5	Rhyolite dykes and ignimbrites	30.78 to 32.58	Bonev, 1968, 1982; Kolkovski et al., 1978, 1996; McCoyd, 1995; Milev et al., 1996; Maneva et al., 1996; Kolkovski and Dobrev, 2000; Ovtcharova et al., 2003; Kaiser-Rohrmeier et al., 2004
Laki ore field	Veins and marble replacement in 4 NNE to N–S-trending faults; 14 Mt ore at 2.90% Pb and 2.16% Zn	Palaeozoic gneisses, amphibolite, marbles, mica schists, volcanic rocks adjacent to caldera margin	Quartz, galena, sphalerite, pyrite, arsenopyrite, chalcopyrite, calcite and rhodochrosite	Quartz–sericite–pyrite–adularia	29.19 to 29.37	200 to 330; 0.5 to 4.7	Shoshonitic intermediate to acid dykes, lavas and pyroclastic flows	34.5? to 31.76	McCoyd, 1995; Christova, 1996; Milev et al., 1996; Kolkovski and Dobrev, 2000; Singer and Marchev, 2000; Ovtcharova et al., 2003; Kaiser-Rohrmeier et al., 2004
Davidkovo ore field	Veins and stockworks at the intersection of NW, E–W, NE-trending faults	Palaeozoic gneisses, amphibolite, marbles, micaschists, Palaeogene conglomerates, subvolcanic rocks	Quartz, galena, sphalerite, rhodochrosite, Mn-calcite, calcite, pyrite, chalcopyrite, arsenopyrite, rare tennantite, enargite, bornite, tellurides			200 to 345	Rhyolite dykes and stocks	32.5	Naphtali and Malinov, 1988; Marinova and Kolkovski, 1995; Ivanov et al., 2000; Kolkovski and Dobrev, 2000; Ovtcharova et al., 2003
Enioveche ore field	W–NW veins and small marble replacement; 4.6 Mt ore at 2.37% Pb and 2.17% Zn	Palaeozoic gneisses, amphibolite, mica schists, marbles, subvolcanic rocks	Quartz, galena, sphalerite, rhodochrosite, pyrite, chalcopyrite, arsenopyrite, scarce molibdenite, tennantite, enargite, bornite, Ag tellurides	Quartz–sericite	25.00		Rhyolite dykes and stocks	30.5	Milev et al., 1996; Kolkovski and Dobrev, 2000; Ovtcharova et al., 2003; Kaiser-Rohrmeier et al., 2004
Ardino ore field	Marble replacement controlled by E–W faults, 0.4 Mt ore at 0.86% Pb and 4.19% Zn	Palaeozoic gneisses, amphibolite, marbles, micaschists, Palaeogene conglomerates, subvolcanic rocks	Sphalerite, chalcopyrite, galena, pyrite, pyrrhotite, marcasite, Ag–Bi–Te minerals, Mn-silicates and Mn-carbonates			320 to 360	Rhyolite and rhyodacite dykes and stocks		Bonev, 1991; Milev et al., 1996
Popsko ore field	Major N–NE and subordinate E–W and SE–NW vein swarms	Palaeozoic gneisses, micaschists, marbles, amphibolites, subvolcanic rocks	Quartz, hematite, pyrite, chalcopyrite, sphalerite–galena, gold–silver–sulphosalts, carbonates	Propylitic, argillic, quartz–adularia; carbonates	~32.8?	230 to 260	Bimodal rhyolite–absarokite dykes and stocks	32.82	Breskovska and Gergelchev, 1988a; Pljushev et al., 1995; Marchev et al., 2003
<i>Epithermal Pb–Zn–Cu ± Ag–Au intermediate-sulphidation</i>									
Spahievo ore field (Chala)	E–W to E–NE-trending veins and breccia zones; 1 Mt ore at 1.96% Pb and 1.72% Zn (1.5 Mt at 10 g/t Au)	Palaeogene volcanic and intrusive rocks	Quartz, galena, pyrite, sphalerite, chalcopyrite (hematite, electrum, tennantite–tetrahedrite, Ag sulphosalts)	Propylitic, quartz–sericite–adularia; carbonate	(32.12)	190 to 280	Shoshonitic intermediate to acid lavas and dykes and monzonites	34.5? to 31.76	Radonova, 1973a; Dimitrov and Dimitrov, 1974; Maneva, 1988; McCoyd, 1995; Christova, 1995, 1996; Singer and Marchev, 2000



Zvezdel-Peheloyad	E-W-trending veins and linear stockwork-like bodies; 4.9 Mt ore at 1.27% Pb and 1.60% Zn	Palaeozoic gneisses, amphibolite, mica schists, Palaeogene conglomerates, sandstone, limestones; volcanics and intrusive rocks	Quartz, sphalerite, galena, pyrite, chalcopyrite, tennantite-tetrahedrite, Ag-Sb sulphosalts, electrum	Propylitic, quartz-sericite-adularia; carbonate		152 to 300	High-K calc-alkaline to shoshonitic mafic-intermediate-acid lavas and dykes	31.9 to 31.13	Atanasov, 1965; Radonova, 1973b; Breskovska and Gergelchev, 1988b; Marchev et al., 2004a
Madjarovo	Radial veins; 10.8 Mt ore at 1.27% Pb and 0.66% Zn, 0.3 Mt Au at 2 to 3 g/t	Palaeozoic gneisses, amphibolite, marbles, volcanic and intrusive rocks	Quartz, galena, pyrite, sphalerite, chalcopyrite, marcasite, tetrahedrite, bornite, rare enargite, electrum, native Au, barite, calcite	Propylitic, argillic, quartz-sericite-adularia	32.10	210 to 283; 2 to 4.5	Shoshonitic to high-K calc-alkaline lavas and dykes and monzonites	32.7 to 32.2	Atanasov, 1959, 1962; Kolkovski et al., 1974; Breskovska and Tarkian, 1993; McCoyd, 1995; Milev et al., 1996; Marchev and Singer, 2002
Losen	Disseminated in subhorizontal layers	Palaeogene volcanic and intrusive rocks	Quartz, galena, sphalerite,	Argillic, quartz-sericite-adularia		80 to 260	Rhyodacite-rhyolitic lavas and stocks, diorites	35?	Bogdanov, 1983; Breskovska and Gergelchev, 1988c
<i>Epithermal (enargite-gold) high-sulphidation</i>									
Perama Hill	Mushroom-shaped stockwork; (11 Mt at 3.8 g/t Au, 8.5 g/t Ag)	Palaeogene sandstones and volcanic	Quartz, pyrite, gold, Au-Ag telluride, bornite, enargite, luzonite, stannite, galena and tetrahedrite, barite	Pervasive silicification, argillic and advanced argillic		175 to 220; 2.5 to 5.6	Shoshonitic to high-K calc-alkaline mafic-intermediate-acid lavas and dykes		Arikas and Voudouris, 1998; McAlister et al., 1999; Scarpelis et al., 1999; Lescuyer et al., 2003; Melfos et al., 2003; Pěckay et al., 2003
Sappes	Stockwork; (1.5 Mt at 15.7 g/t Au, 8.6 g/t Ag)	Volcanic and intrusive rocks	Quartz-barite veins with chalcopyrite, pyrite, galena, sphalerite, enargite, luzonite, tetrahedrite-tennantite, tellurides, native gold	Silicic, argillic and advanced argillic		Quartz 260 to 315; 1.2 to 1.7; barite 160 to 220; 4.2 to 5.5	Calc-alkaline to high-K calc-alkaline andesitic to rhyodacitic lavas and pyroclastic rocks	21.9 to 31.8	Michael et al., 1995; Bridges et al., 1997; Arikas and Voudouris, 1998; Shaw and Constantinides, 2001; Melfos et al., 2003; Voudouris et al., 2003; Pěckay et al., 2003
<i>Epithermal sediment-hosted</i>									
Ada Tepe; Surnak; Sinap	Massive subhorizontal tabular body and E-W veins; (6.15 Mt ore at 4.6 g/t Au)	Supradetachment Palaeogene sediments	Electrum, pyrite, Au-Ag tellurides	Silicification, chlorite, pyrite, adularia-sericite, carbonates, clay minerals	34.99	150 to 200? (150 to 240; 0.7 to 2.1; 240 to 270; 0.5 to 1.4)	High-K calc-alkaline andesites, rhyolitic and latitic dykes	35? to 31.8	Christova, 1996; Kunov et al., 1999; Marchev et al., 2003, 2004b
Stremtsi	Veins, tabular and tube-like bodies	Palaeogene sandstone and conglomerate	Electrum, pyrite, small amount base metals	Silicification, adularia, sericite, carbonate			High-Ba trachybasalts to latites	33.1 to 29.2?	Stamatova, 1996; Marchev et al., 2004a
Rosino	NE normal fault and veinlet disseminated; (6.07 Mt ore at 2.3 g/t Au)	Palaeogene sandstone and conglomerate	Electrum, small amount galena, sphalerite, chalcopyrite, carbonates and quartz	Silicification carbonate-pyrite	35.94	Quartz 90 to 270; 0.9; adularia 220 to 310; 2.2	Bimodal rhyolite-absarokite dykes	32.8	Nokov et al., 1992; Christova, 1995, 1996; Marchev et al., 2003
Sedefche	Stockwork; 1.74 Mt at 1.33 g/t Au and 48.8 g/t Ag	Palaeogene volcanoclastic sediments, limestones	Chalcedony, quartz; pyrrhotite, arsenopyrite, pyrite, marcasite, sphalerite, galena, chalcopyrite, tetrahedrite; Pb-Ag-Sb-sulphosalts; stibnite; barite	Silicification, argillic		220 to 270; 4.9	Rhyolitic dykes, andesites		Christova, 1995, 1996; Mladenova, 1998

dominated by quartz–adularia and carbonate, which is consistent with the slightly lower temperature of homogenization for fluid inclusions of the quartz–sulphide assemblage (Petrov, in [Breskovska and Gergelchev, 1988a](#)). There are no direct age determinations, but crosscutting relationships with precisely dated fresh equivalents of high-silica rhyolite suggest that mineralization is younger than 32.8 Ma ([Marchev et al., 2003](#)).

#### 4.2. Epithermal ore deposits in calc-alkaline to shoshonitic complexes

In the Eastern Rhodopes, epithermal deposits are mainly hosted by differentiated calc-alkaline, high-K calc-alkaline and shoshonitic volcanoes, sometimes associated with low-grade porphyry Cu–Mo occurrences in monzonitic to granitic stocks intruded in the volcanic rocks. They variably exhibit characteristics of low-, intermediate-, and high-sulphidation deposits

([Hedenquist, 1987](#); [Hedenquist et al., 2000](#); [Sillitoe and Hedenquist, 2003](#)), previously known as adularia–sericite and acid sulphate deposits ([Heald et al., 1987](#)).

*Intermediate-sulphidation epithermal Pb–Zn–Cu ± Ag–Au deposits* are located within major Palaeogene shoshonitic to high-K calc-alkaline volcano-intrusive centres of the Bulgarian Eastern Rhodopes (e.g., Spahievo in the Borovitsa complex; [Zvezdel; Madjarovo](#)), or more rarely within acid volcanoes (e.g., [Losen](#); [Fig. 3](#)). Based on their well-expressed vertical zonation and their sulphide mineralogy, including Fe-poor sphalerite, high barite content and elevated fluid salinity, they are clearly of intermediate-sulphidation character ([Hedenquist et al., 2000](#); [Sillitoe and Hedenquist, 2003](#)). Most of them are base-metal rich, and for about 40 years until 1995 more than 16.5 Mt of Pb–Zn ore ([Table 5](#)) was extracted from Spahievo, Zvezdel and Madjarovo ([Milev et al., 1996](#)). At present, only the Pcheloyad mine from the Zvezdel

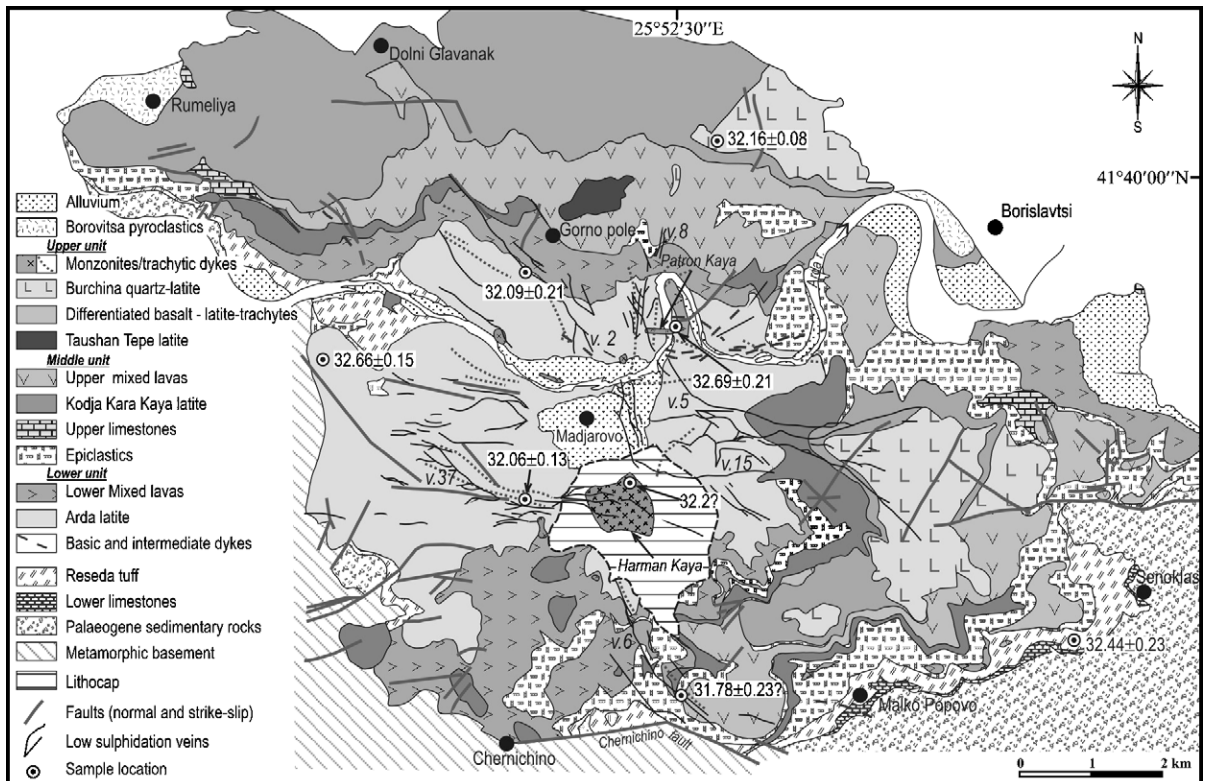


Fig. 6. Simplified geological map of the Madjarovo volcano, showing the distribution of intermediate-sulphidation veins and  $^{40}\text{Ar}/^{39}\text{Ar}$  ages of the host rocks and alteration; after [Marchev and Singer \(2002\)](#).

ore field is in production as a Pb–Zn mine. Gold is present in all deposits, but only ca. 0.3 Mt containing 2 to 3 g/t Au was extracted from the upper parts of two base metal veins of Madjarovo ore field. A new gold mine at Chala in the Spahievo ore field will be opened by GORUBSO, based on ca. 15 t of gold reserves (A. Kestebekov, pers. comm., 1998).

Mineralization in all ore fields is closely associated with dyke swarms that fed the magmatic activity within the large volcanic centres. Epithermal mineralization in Madjarovo ore field is hosted in a crudely radial set of fractures (Atanasov, 1959), locally filled by coarse-porphyrific trachytic dykes (Fig. 6). Over the years, about 140 well-defined radial veins have been identified, the largest of which are 3 to 4 km long and locally up to 30 m thick. The Spahievo ore field is situated at the eastern end of the Borovitsa volcanic area (Figs. 3 and 7). Faults striking E–W to E–NE, radially from the eastern ring fault of the Borovitsa caldera, control both rhyolitic dyke intrusion and base-metal–Au mineralization (Maneva, 1988; Singer and Marchev,

2000). Mineralized breccia zones and veins are up to 1.4 km long and 20 to 30 m thick. Mineralization in the central part of the Zvezdel–Pcheloyad ore field is hosted predominantly by large veins (up to 2 to 3 km long and up to 2 m thick) (Breskovska and Gergelchev, 1988b) and linear stockwork-like bodies in the northern part (Obichnik), whereas in Losen ore is disseminated in subhorizontal layers and in steep zones or veins (Breskovska and Gergelchev, 1988c).

A large variety of minerals are present in the volcanic-hosted intermediate-sulphidation epithermal systems, dominated by galena, sphalerite, chalcopryrite and pyrite with minor marcasite, tennantite and bornite (Table 5). The paragenesis at Madjarovo includes up to six stages (Atanasov, 1962, 1965; Kolkovski et al., 1974, Breskovska and Tarkian, 1993). Early mineralization stages with quartz–sulphide were followed by quartz–carbonate phases at Spahievo (Dimitrov and Dimitrov, 1974), and by quartz–chalcedony with tetrahedrite–tennantite and Ag–Sb and Pb–Sb sulphosalts, and a final carbonate

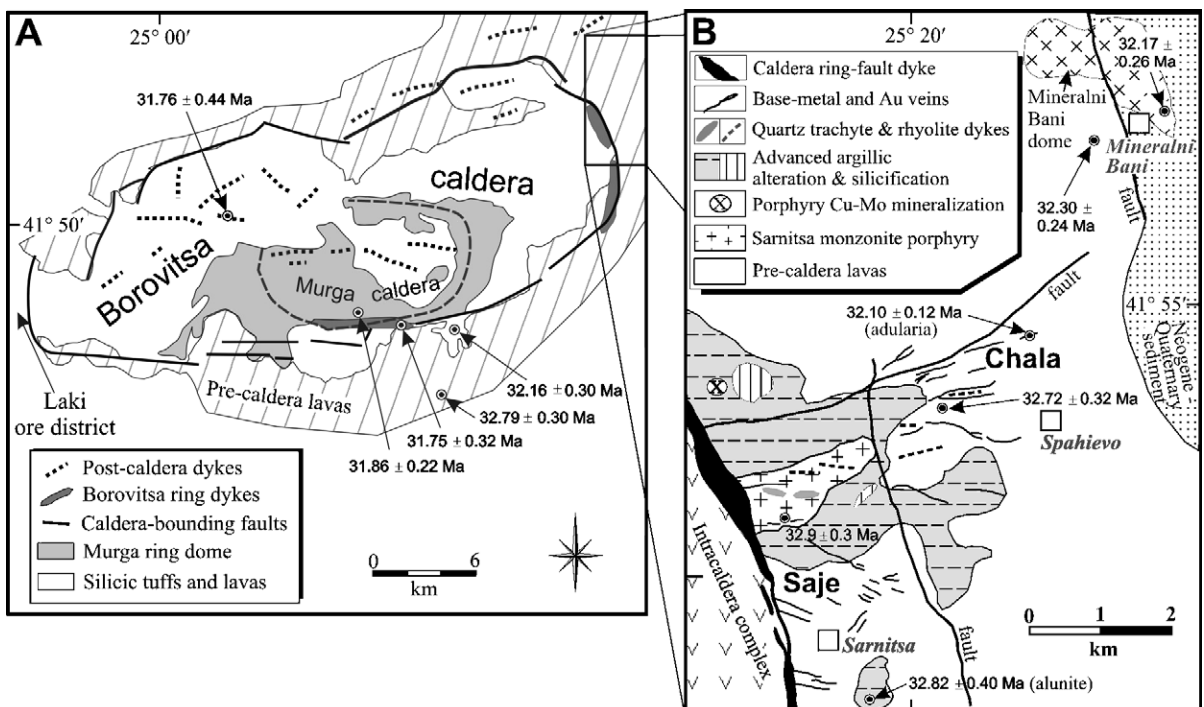


Fig. 7. Schematic geological maps of the Borovitsa volcanic area and Spahievo and Laki ore districts, with locations of veins and  $^{40}\text{Ar}/^{39}\text{Ar}$  ages of the host rocks and alteration. Geology after Ivanov (1972), ages after Marchev and Singer (2002).

stage in the Zvezdel–Pcheloyad ore field (Breskovska and Gergelchev, 1988b).

Most of the deposits exhibit vertical and lateral zonation. Atanasov (1962), Gergelchev et al. (1977) and Bogdanov (1983) describe Cu, Pb and Zn in the central and lower part, and Au, Ag, sulphosalts and barite in the uppermost part and periphery of the Madjarovo and Losen systems, as in current models of epithermal mineralization (Berger and Eimon, 1983; Buchanan, 1981). A similar zonality seems to have existed in the Spahievo vein system before it was truncated by the Borovitsa caldera fault (Singer and Marchev, 2000). Chalcopyrite–galena–sphalerite–quartz mineralization in the Saje deposit, which is closer to the caldera rim and deeply eroded, was later replaced by quartz–specularite–adularia and Au mineralization that dominates in the Chala deposit, 4 km from the caldera rim. A massive cap of low-temperature silica (~150 °C), inferred from the quartz–kaolinite isotope geothermometers, implies a greater degree of meteoric input (McCoyd, 1995). This cap is more resistant to erosion than the other alteration and might be the reason for preservation of the Chala deposit (Singer and Marchev, 2000).

The alteration mineralogy and zonation in the Eastern Rhodopean deposits have been studied by many authors; e.g., Radonova (1960), Velinov et al. (1977), Velinov and Nokov (1991) and McCoyd (1995) in Madjarovo; Radonova (1973a), Kunov (1991a, b) and Velinov et al. (1990) in Spahievo; Radonova (1973b) and Kunov et al. (2000) in Zvezdel–Pcheloyad. The alteration accompanying sulphide mineralization commonly overprints previous advanced argillic (lithocap), potassic or district-wide propylitic alteration associated with shallow intrusions (e.g., in Madjarovo: Radonova, 1960; Marchev et al., 1997). A generalized sequence of alteration assemblages deduced from Madjarovo and Spahievo base- and precious metal veins (Kunov, 1991a; Velinov and Nokov, 1991; McCoyd, 1995; Marchev et al., 1997) includes (1) an inner quartz–adularia–sericite (illite) envelope around large quartz–sulphide veins or breccia zones containing up to 13 wt.% K<sub>2</sub>O, mostly as adularia; (2) an intermediate quartz–sericite zone and (3) an outer propylitic alteration, with calcite, chlorite, albite, pyrite and subordinate epidote or sericite, extending tens to hundreds of m away from veins or vein swarms.

Fluid inclusion studies (Table 5) have been performed mostly on quartz, calcite and, more rarely, on sphalerite in most of these deposits (Atanasov, 1965; Dimitrov and Krusteva, 1974; Bogdanov, 1983; Breskovska and Tarkian, 1993; Nokov and Malinov, 1993; McCoyd, 1995; Christova, 1996). The major mineralization occurred at 210 to 280 °C, although ore deposition may have started at temperatures >300 °C and have finished at 80 to 105 °C (Bogdanov, 1983). The hydrothermal mineralization precipitated from aqueous Na–K–Ca–Cl solutions of 2 to 4 eq. wt.% NaCl.

Hydrothermal activity in the Spahievo and Madjarovo ore fields has been dated using <sup>40</sup>Ar/<sup>39</sup>Ar (Singer and Marchev, 2000; Marchev and Singer, 2002). Surprisingly, ages of adularia from Au mineralization of the Chala gold deposit (32.10 Ma) and of an alteration halo of Pb–Zn–Au veins at Madjarovo (32.06 Ma) suggest that the two deposits formed almost simultaneously. However, whereas intermediate-sulphidation mineralization and preceding advanced argillic and potassic alteration occurred within less than 200,000 years at Madjarovo, these processes at Spahievo were separated by more than 700,000 years.

*High-sulphidation (enargite–gold) mineralization* occurs largely in recently discovered gold-bearing prospects in the southeastern Rhodopes in Greece (Michael et al., 1995; Bridges et al., 1997; Arikas and Voudouris, 1998; Scarpelis et al., 1999; Shawh and Constantinides, 2001; Melfos et al., 2003; Lescuyer et al., 2003; Voudouris et al., 2003).

Estimated reserves at Perama Hill include 11 Mt of oxide ore grading at 3.8 g/t Au and 8.5 g/t Ag (McAlister et al., 1999). Total reserves in the Sappes deposit include 1.2 Mt of ore with 18.4 g/t Au and 9.4 g/t Ag (Shawh and Constantinides, 2001).

Epithermal mineralization is hosted in calc-alkaline to high-K calc-alkaline volcanic rocks ranging in composition from andesitic to rhyodacitic (Arikas and Voudouris, 1998). The deposits show close spatial relationships with Cu–Mo porphyry systems (Arikas and Voudouris, 1998; Voudouris et al., 2003). Mineralization in Perama Hill comprises a mushroom-shaped stockwork body in weathered sandstones and hydrothermally altered andesite breccia, which host oxide and refractory sulphide mineralization, respectively (Lescuyer et al., 2003). Ore at Sappes occurs in three prospects, which are divided by normal faults



and hosted in subhorizontal brecciated zones between andesite lava flows.

Early hypogene ore at Perama Hill (Lescuyer et al., 2003) consists of quartz, pyrite and minor Au, Au–Ag tellurides, enargite, luzonite, stannite, galena and tetrahedrite. High-grade gold mineralization is associated with barite (Melfos et al., 2003) and Fe oxyhydroxides (Lescuyer et al., 2003) in the upper oxidized part. Mineralization was preceded by pervasive silicification, argillic and advanced argillic alteration (Scarpelis et al., 1999; Lescuyer et al., 2003). According to Voudouris et al. (2003), there is evidence for temporal transition from high- to intermediate sulphidation quartz–barite vein mineralization. Ore mineralization at Sappes is associated with stockwork veinlets within silicic, advanced argillic and sericitic alteration. Mineralization is represented by quartz and barite veins, with chalcopyrite, pyrite, galena, sphalerite, tetrahedrite–tennantite, enargite, luzonite and tellurides. Native gold occurs in the oxidized (quartz–barite) and hypogene (sulphide and sulphosalt) ores. Fluid inclusion studies by Scarpelis et al. (1999) show a salinity decrease of the hydrothermal solutions from silicic alteration to gold-bearing quartz–barite veins. The temperature of the fluids ranges from 175 to 220 °C. Temperatures and salinities measured in the milky quartz and barite from the mineralized zones in Sappes vary between 160 and 315 °C and 1.2 and 5.5 eq. wt.% NaCl, being rather different in both minerals (Shaw and Constantinides, 2001).

Absolute age determinations of high-sulphidation epithermal mineralization in Greece are not available, but the emplacement age of the igneous rocks in the Petrota graben provides a maximum age constraint of ca. 27 Ma. A large range of reported K–Ar ages from the host rocks (32 to 22 Ma; Pěčskay et al., 2003) may suggest overlapping Early Oligocene and Miocene volcanic phases that are difficult to relate to the Au mineralization.

#### 4.3. Sediment-hosted gold deposits

In the Eastern Rhodopes, a somewhat unusual type of gold deposits formed in close association with extensional core complexes. These low-sulphidation epithermal Au deposits, exemplified by the Ada Tepe prospect (Box 2–2; Marchev et al., 2005, this volume), are hosted by clastic sedimentary rocks

in syntectonic half-graben basins immediately overlying detachment faults. They do not show an obvious relationship to local magmatism. This group of ore deposits has been recently discovered in the Eastern Rhodopes, but appears to have been known in Thracian, Roman and Middle-age times, as indicated by numerous old workings dating back to the 5th Century B.C. ( $^{14}\text{C}$  dating at Sedefche; Avdev, 1997). Sediment-hosted gold mineralization has been found at Ada Tepe, Stremtsi, Rosino, Surnak and Sedefche (Fig. 3). The first three of these are being actively explored by international companies. Ada Tepe is of a size and grade to be potentially economic; ore reserve calculations indicate 6.15 Mt ore @ 4.6 g/t Au. Ore reserves of Rosino (also known as Tashlaka) comprise ca. 6.07 Mt ore but at a lower grade (2.3 g/t Au). Resources identified in the north Sedefche body are 1.74 Mt at 1.33 g/t Au and 48.8 g/t Ag. Stremtsi is at an initial stage of exploration.

The Ada Tepe deposit (Box 2–2, Marchev et al., 2005, this volume; Marchev et al., 2003, 2004b) is hosted by syndetachment Maastrichtian to Palaeocene sediments, which overly the north-eastern closure of the Kessebir metamorphic core complex. Gold mineralization at Ada Tepe has two types of occurrence: (1) as a massive, tabular orebody located along and immediately above the detachment fault, and (2) as open-space filling ore within conglomerate and sandstone that was brecciated along predominantly E–W-oriented subvertical listric faults within the hanging wall of the detachment. Several other nearby prospects (Sinap, Surnak, Skalak) are close to or within the same detachment. The major ore-hosting structure in the Rosino deposit is a NNE-trending steep fault limiting the western end of an E–W-elongated graben within the upper plate of the detachment system in the centre of the Biala reka–Kechros dome (Figs. 2 and 3; Marchev et al., 2003; Bonev et al., in press). Host rocks consist of sandstone and conglomerate derived from the Variegated Complex and low-grade Mesozoic rocks. Similar mineralization at Stremtsi is hosted by Palaeogene sandstone and conglomerate overlying metamorphic basement rocks of the Variegated Complex. In contrast, Plofka and Sedefche South are located in limestones, and Sedefche North is hosted by volcano-clastic sediments and limestones, which unconformably overlie generally unmineralized metamorphic basement rocks.

Apart from its unusual structural setting and lack of obvious relationships with the local magmatism, the sediment-hosted mineralization exhibits many features that are typical of the adularia class of epithermal deposits, including banded veins of variably crystalline silica with adularia, bladed carbonates (occurring locally at Rosino, but commonly at Ada Tepe), and locally visible gold in some veins, giving rise to bonanza grades of up to 50 to 60 g/t over 10 to 20 m. The deposits are typically very base-metal-poor (Stremtsi, Ada Tepe), except for a small amount of galena, sphalerite and chalcopyrite at Rosino (Stamatova, 1996; Marchev et al., 2003). Sedefche is another exception, having a higher content of base metals along with Pb–Ag–Sb sulphosalts and stibnite (Mladenova, 1998). Visible Au has not been established, but Mladenova (1998) suggested that it was concentrated in the early pyrrhotite and arsenopyrite. These features (invisible gold, Sb mineralization and carbonate-rich host sediments) are very similar to ore deposits described in southern Tuscany, in the peripheral zones of the active geothermal fields of Larderello, Monte Amiata and Laterra (Lattanzi, 1999 and references therein).

Gold mineralization at Ada Tepe (Marchev et al., 2004b) and Stremtsi (Stamatova, 1996) consists mainly of electrum, associated with a small amount of pyrite or iron oxide (goethite). Traces of Au–Ag tellurides have been found in Ada Tepe. Electrum tends to occur on the margins of opaline quartz–adularia bands (in Ada Tepe) or in quartz–adularia aggregates and veinlets (at Stremtsi and Rosino). Unlike Ada Tepe, Au at Stremtsi shows highly variable composition and morphology. Gold in Rosino occurs as small intergrowths and inclusions along the grain boundaries of sulphides precipitated at the margins of thin (mm to cm) quartz–adularia–ankerite–siderite veinlets.

Alteration at Ada Tepe and Stremtsi is represented by quartz, adularia, sericite, pyrite, chlorite, carbonates and clay minerals in variable proportions. Massive silicification is characteristic of the tabular body of Ada Tepe and the limestone of Sedefche, which is converted into jasperoid quartz.

Fluid inclusions have been studied only in the Rosino deposit (Nokov et al., 1992; Christova, 1995, 1996) and at Surnak and Sinap (Christova, 1995, 1996; Kunov et al., 1999). The homogenization

temperatures of fluid inclusions in quartz from Rosino are slightly lower than those in adularia (Table 5). Cryometric analyses in the adularia (Christova, 1995, 1996) indicate low salinity with a variable component of Mg or Ca chloride. Mineralization at Surnak and Sinap precipitated from very dilute Na–K–Cl solutions at low temperatures. Temperature and pressure conditions in the Ada Tepe and Sedefche deposits have been roughly estimated on the basis of geological and mineralogical data, which indicate low temperatures and a shallow depth (<200 m) for the deposition of the bonanza Au bands at Ada Tepe. It probably resulted either from decompression, causing boiling and a temperature drop, or from mixing with cooler meteoric groundwater (Marchev et al., 2004b). Mineralization at Sedefche seems to have occurred at slightly higher temperatures.

$^{40}\text{Ar}/^{39}\text{Ar}$  total fusion ages of adularia (Marchev et al., 2003) show that the mineralization at Ada Tepe and Rosino formed at 35 and 36 Ma, respectively (Marchev et al., 2003). Detrital muscovite separated from a gneiss clast within the alteration halo at Rosino yielded a much older age of 42 Ma (R. Spikings, pers. comm., 2004). This age difference between muscovite and adularia in the alteration zone of the Rosino deposit implies that muscovite was not heated to a temperature above its closure temperature (i.e., was not thermally reset) during hydrothermal activity.

## 5. Discussion

### 5.1. Space–time relationships between mineralization, magmatism, metamorphism and tectonic deformation

The origin of the Madan base metal mineralization has been related by several authors to the spatially associated Tertiary rhyolitic dykes (Ivanov, 1983; Kolkovski et al., 1996). Recently obtained  $^{40}\text{Ar}/^{39}\text{Ar}$  data on hydrothermal muscovites and U–Pb zircon and Rb–Sr ages of regional magmatism and metamorphism (Peytcheva et al., 1993; Arkadaskiy et al., 2000; Ovtcharova et al., 2003; Kaiser-Rohrmeier et al., 2004) reveal the general timing of these processes in the Central Rhodopes, as summarized in Fig. 5.  $^{40}\text{Ar}/^{39}\text{Ar}$  ages of sericite in the sulphide veins in the Madan field (Kaiser-Rohrmeier et al., 2004) are ca. 0.5 to 1.0 million years younger than the U–Pb

zircon ages of nearby Perelic ignimbrites and a rhyolite dyke, but have an age identical to the Kotili–Vitinia ignimbrites (Ovtcharova et al., 2003 and unpubl. data). The mineralization in the Laki ore field (~29.3 Ma; Kaiser-Rohrmeier et al., 2004) is significantly younger than post-caldera volcanism of Borovitsa (~31.8 Ma; Singer and Marchev, 2000), but could still potentially be related to late-stage crystallization of deeper intrusive rocks. Ages of pre-ore muscovite (36 to 35 Ma; Kaiser-Rohrmeier et al., 2004), close to zircon ages of migmatite and pegmatite formation at 36 to 37 Ma (Peytcheva et al., 1993; Arkadaskiy et al., 2000; Ovtcharova et al., 2003), are 4 to 5 million years older than the age of the mineralization in all districts and are more closely related to the immediately preceding metamorphic history of the dome.

The  $^{40}\text{Ar}/^{39}\text{Ar}$  studies of Singer and Marchev (2000) and Marchev and Singer (2002) have demonstrated that the volcanic-hosted intermediate-sulphidation epithermal deposits in the Eastern Rhodopes show a direct relationship to specific magmatic events. For example, mineralized veins in Chala and Madjarovo (~32.1 Ma) share fault zones with rhyolitic and trachytic dykes intruded less than 200,000 years before mineralization (Table 5). Similar time relationships have been established in other precisely dated epithermal systems in the world; e.g., Sleeper and Round Mountain, Nevada (Conrad and McKee, 1996; Henry et al., 1997). The only major difference between the Chala and Madjarovo systems is that mineralization at Madjarovo tends to occur at the end of magmatic activity, whereas that in Chala (Spahievo ore field) formed ca. 200,000 to 300,000 years prior to the collapse of the large (30 × 15 km) Borovitsa caldera. Guillou-Frottier et al. (2000) show that pre-caldera epithermal mineralization is characteristic only of large calderas, where emplacement of a large silicic magma chamber may create significant extensional stress in the brittle upper crust. Radial veins to the east of the eastern caldera fault of Borovitsa caldera seem to confirm such a mechanism.

Precisely dated rhyolitic dykes from Kessebir and Biala Reka Domes (31.8 and 32.8 Ma; Marchev et al., 2003) and intraplate alkaline basalts (28 to 26 Ma; Marchev et al., 1998b) are distinctly younger than adularia of the sediment-hosted deposits Ada Tepe and Rosino (35 and 36 Ma, respectively) and they

cannot be related to the low-sulphidation mineralization. Mineralization of the Ada Tepe deposit could be coeval with ca. 35 Ma lavas of the Iran Tepe palaeo-volcano located 4 km to the north-east of the deposit (K–Ar; Lilov et al., 1987; Z. Pècskay, pers. comm., 2002), but their stratigraphic position above the Upper Priabonian to Lower Oligocene marl–limestone formation suggests that Iran Tepe lavas are younger than 34 Ma. In addition, overlying Upper Eocene to Oligocene sedimentary rocks, which cover the northern part of the deposit, are not affected by hydrothermal alteration. On the other hand, the close association of high-grade gold mineralization with the detachment fault indicates an intimate association of Ada Tepe and similar deposits with metamorphic core-complex formation. Bonev et al. (in press) argue that ore deposit formation at ca. 35 Ma in the hanging wall of the detachment fault coincides with late-stage brittle extension after cooling of the basement rocks to temperatures <200 °C.

## 5.2. Source of metals and fluids

Comparing the available Pb and Sr isotopic analyses of sulphides and gangue minerals to the igneous and metamorphic rocks constrains the source of metals and fluid pathways in the hydrothermal systems (Figs. 8 and 9). Sulphides have a rather uniform Pb isotope composition with elevated  $^{207}\text{Pb}/^{204}\text{Pb}$  and  $^{208}\text{Pb}/^{204}\text{Pb}$  for a given  $^{206}\text{Pb}/^{204}\text{Pb}$ , compared with the average crustal growth curve of Stacey and Kramers (1975). The homogeneity of the Pb isotope composition of sulphides from hydrothermal deposits from such a large area and hosted in such different rock types is rather surprising. Kalogeropoulos et al. (1989) and Nebel et al. (1991), who also pointed out the uniformity of the Pb isotope composition for ore and igneous rock lead in the Greek parts of the Rhodopes and Serbo-Macedonian Massif, suggested that it is the result of extensive reworking of Palaeozoic crust in Mesozoic to Tertiary times.

Most Pb isotope data of sulphides from the Central and Eastern Rhodopes fall within the ratios for the underlying metamorphic basement rocks (Fig. 8A). The simplest interpretation is that the ore Pb is derived from the metamorphic rocks through leaching by fluids of any origin. However, separate considera-

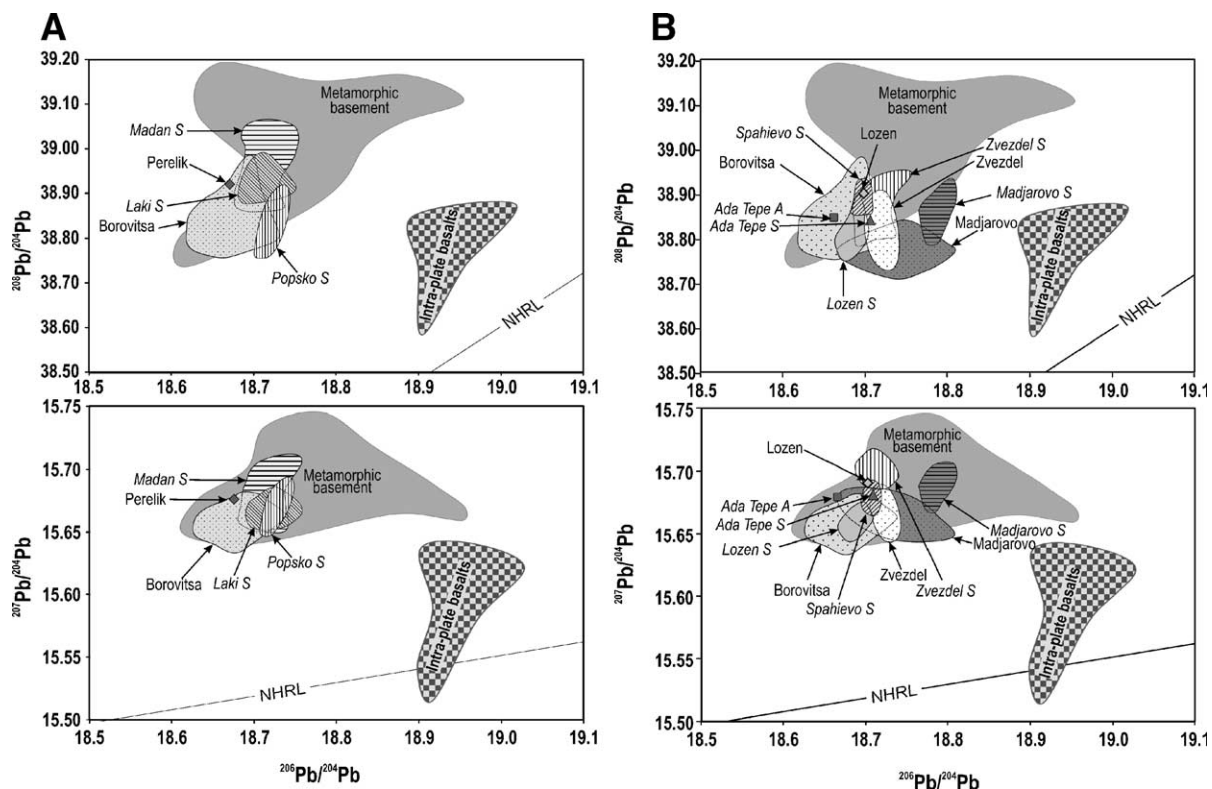


Fig. 8. (A) Pb isotope compositions of sulphides from the metamorphic-hosted vein base-metal deposits at Madan, Laki and Popsko, compared with sanidines from local igneous rocks (Perelik, Borovitsa) and metamorphic basement rocks; (B) volcanic-hosted low-sulphidation deposits from the Eastern Rhodopes compared with sanidines from host igneous rocks and metamorphic-basement rocks. Also plotted are pyrite and alteration from the Ada Tepe area. Data for Pb isotopes of igneous rock K-feldspar are from Table 4; Pb isotopes for galena and other sulphides (S) are from Amov et al. (1993) and Marchev et al., (unpubl. data). A=alteration. Pb isotopes for the metamorphic rocks are from Frei (1995) and for intra-plate basalts from Marchev et al. (1998b).

tion of the Pb isotopes in dome-related vein and replacement-type Pb–Zn–Ag deposits (Fig. 8A) and the volcanic-hosted epithermal systems (Fig. 8B) reveals some differences. Madan and Laki from the former group show very limited ranges and the highest  $^{207}\text{Pb}/^{204}\text{Pb}$  and lowest  $^{206}\text{Pb}/^{204}\text{Pb}$  ratios, entirely overlapping the composition of metamorphic rocks. Sulphides from Popsko show slightly higher  $^{206}\text{Pb}/^{204}\text{Pb}$  and lower  $^{208}\text{Pb}/^{204}\text{Pb}$ . Sulphides from the volcanic-hosted intermediate-sulphidation epithermal systems show a wider range in  $^{206}\text{Pb}/^{204}\text{Pb}$  values, Madjarovo being the most radiogenic, and a regular decrease from east to west through the Zvezdel and Spahievo ore fields (Breskovska and Bogdanov, 1987). Lead isotope compositions of sulphides from each district have very limited ranges, the  $^{206}\text{Pb}/^{204}\text{Pb}$  values being indistinguishable from the

compositions of the spatially associated intermediate and acid igneous rocks, except for a slight enrichment in thorogenic and uranium Pb isotopes towards the metamorphic basement compositions. The overlap of the sulphides from each ore field with the compositional fields of the magmatic rocks suggests a largely magmatic origin of Pb in the mineralization. However, the general overlap with the metamorphic rocks suggest that crustal Pb is also present in the hydrothermal fluids, having been leached directly or inherited indirectly from the crustal contamination of the magmas.

Strontium isotope data (Fig. 9) throw additional light on the contribution of different possible sources to the hydrothermal fluids. Limited Sr isotopes for the barite and carbonates from Madan, Popsko, Zvezdel, Madjarovo and a hydrothermal apatite from Chala show that metamorphic-hosted vein- and replacement



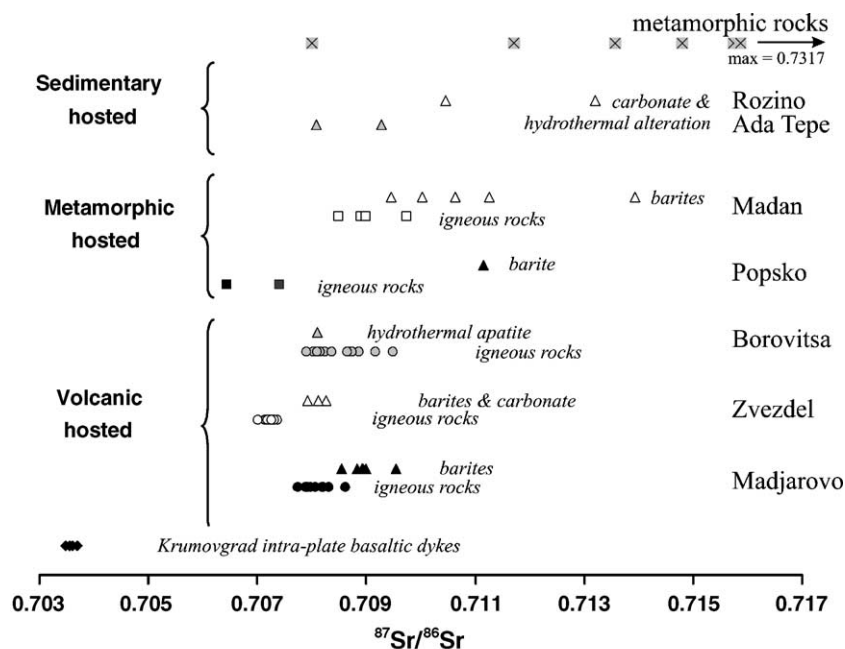


Fig. 9.  $^{87}\text{Sr}/^{86}\text{Sr}$  isotope compositions of hydrothermal minerals and rocks from metamorphic-hosted, volcanic rock-hosted and sedimentary rock-hosted deposits, compared with local igneous and metamorphic basement rocks. See text for discussion. Data for Sr isotopes of igneous rocks are from Table 3; data for barite, carbonates and alteration are from Marchev et al. (2002, 2004b and unpubl. data); data for metamorphic rocks are from Peytcheva et al. (1992) and Plyusnin et al. (1988).

Pb–Zn–Ag deposits (Madan, Popsko) are more radiogenic than the local igneous rocks. Strontium compositions are closer to or within the metamorphic range, consistently with a significant contribution from the basement rocks. In the volcanic-hosted epithermal deposits, small variations in the Sr isotope values of the gangue minerals lie within the magmatic range (e.g., Chala and Zvezdel) or show only slight  $^{87}\text{Sr}$  enrichment relative to host igneous rocks (Madjarovo). These data are consistent with the Sr contribution coming entirely from the igneous source with little or no input from the local metamorphic basement. A detailed Sr isotope study of barite from veins of variable thickness in the Madjarovo intermediate-sulphidation system (Marchev et al., 2002) demonstrated larger variations of the isotopes in thinner veins and almost constant isotopic compositions in the large veins. These values are more radiogenic than those of the host or associated magmatic rocks but lower than those of the metamorphic basement. Strontium isotope data were interpreted by Marchev et al. (2002) to derive from a crystallizing granite pluton through exsolution

and expulsion of magmatic water, followed by limited interaction of the fluid with more radiogenic metamorphic and less radiogenic volcanic rocks.

Studies of stable isotopes (O and D) in silicates, sulphides, sulphates and carbonates from alteration and ore veins from Madjarovo, Drumche, Pcheloyad, Spahievo and Luky (McCoyd, 1995) and inclusion fluids in galena from Madan (Bonev et al., 1997) confirm a contrasting origin of fluids in typical volcanic-hosted epithermal systems and metamorphic-hosted systems. According to McCoyd (1995), fluid responsible for the epithermal systems of Madjarovo and Drumche deposits may contain a significant component (up to 60%) of magmatic water, in addition to meteoric waters, whereas the mineralizing fluid in Laki is derived predominantly from exchanged meteoric water. The stable isotope characteristics of fluids directly determined in galena-hosted fluid inclusions from Madan (Bonev et al., 1997) also indicate a predominantly meteoric origin of these ore fluids, consistent with inclusion chemistry and thermal modelling by Kostova et al. (2004).



Limited measurements of Pb-isotope composition of pyrite and whole rock Pb in the Ada Tepe deposit (Fig. 8B) fall within the range of ratios for feldspars in the Zvezdel volcano as well as the field of the Rhodope metamorphic rocks (Marchev et al., 2004b) and do not allow any discrimination between a metamorphic and an igneous origin of Pb in the hydrothermal fluid. A significant contribution of the basement to the ore-forming fluid of the sediment-hosted Au deposits is apparent from the Sr isotope systematics of the Ada Tepe and Rosino deposits (Marchev et al., 2003, 2004b). Bulk rock and carbonate Sr isotope data from Ada Tepe and Rosino lie in the lower range of present-day  $^{87}\text{Sr}/^{86}\text{Sr}$  isotopic ratios for gneisses in the Eastern Rhodopes (Peytcheva et al., 1992; Peytcheva, 1997) but are much higher than the Sr isotopic values of the local, probably younger magmatic rocks from Iran Tepe and Zvezdel. These data have been interpreted by Marchev et al. (2004b) to represent a mixture of metamorphic and a small amount of old magmatic source (see below) isotopically similar to the Iran Tepe and Zvezdel magmas.

### 5.3. Magmatic influence on metal content of the Rhodope ore deposits

In style and composition, the Tertiary ore deposits in the Rhodope Massif exhibit significant geographic variations. The most striking feature is the increase in Cu and Au and the decrease in Pb, Zn and Ag, from the Central Rhodopean vein and metasomatic deposits, through the Eastern Rhodopean intermediate-sulphidation and high-sulphidation deposits. This difference is noticeable even for ore deposits of the same class. For example, the metamorphic-hosted vein deposit at Popsko is characterized by a much higher content of Cu and Au compared to its Central Rhodope counterparts. Except for the sediment-hosted epithermal Au deposits, changes in style and composition of the Central and Eastern Rhodopean ore deposits may be related to the changes in the chemical and isotopic composition of local magmatic rocks and to the nature of the host rocks.

Vein and replacement Pb–Zn deposits of the Madan and Biala Reka domes are spatially and temporally related to high-silica rhyolitic dykes and contemporaneous large ignimbrite deposits situated nearby. In the vicinity of the Popsko vein, magmatism

is bimodal, rhyolites being cut by later absarokite-like bodies. Most Eastern Rhodopean epithermal intermediate-sulphidation deposits are spatially and temporally related to typical shoshonitic suites, with or without subordinate high-K calc-alkaline or ultrahigh-K varieties, and can be referred to as deposits related to alkaline rocks (Richards, 1995; Jensen and Barton, 2000; Sillitoe, 2002). The most distinctive characteristics of these deposits are elevated contents of tellurides and fluorite, vanadian mica (roscoelite), intense and widespread potassic alteration and deficiency of quartz gangue. From all these characteristics, the Eastern Rhodopean deposits possess only extensive potassic (adularia–sericite) alteration. They also differ from typical alkaline-related deposits in having elevated Ag and base-metal sulphides, which are more typical of the intermediate sulphidation class of epithermal deposits (Hedenquist et al., 2000), except for the subordinate presence of carbonates. In an attempt to explain the predominance of Pb–Zn over Au in the Rhodopes, Mitchell (1992, 1996) called on more saline fluids, or on the availability at depth of a Pb, Zn and Ag-rich source in the older basement. Available salinity data for the metamorphic-hosted Pb–Zn veins and volcanic-hosted intermediate-sulphidation deposits are both less than 5 eq. wt.% NaCl, but 2 to 3 eq. wt.% NaCl is adequate to transport ore-forming concentrations of Pb and Zn (Kostova et al., 2004). Leaching from old strata-bound Pb–Zn mineralization in deformed marbles, discovered in deep boreholes, has also been suggested as a potential metal source (Kolkovski et al., 1996). High-sulphidation mineralization at Perama Hill and Sappes on the Greek side of the Rhodopes is hosted in predominantly calc-alkaline to high-K calc-alkaline rocks (Table 5; Fig. 3). Such a spatial association between high-sulphidation deposits and calc-alkaline magmas has also been demonstrated earlier at other deposits (Arribas, 1995; Hedenquist et al., 1996). Perama Hill seems to be an exception to this rule, being associated with rhyolites, dacites and shoshonites, but closer examination of the volcanic evolution shows that the youngest igneous rocks, which are temporally closer to the mineralization, are high-K calc-alkaline mafic to intermediate magmas (Marchev et al., unpubl. data).

An explanation contributing to the differences between the metal proportions of the Rhodopean ore deposits can be derived from variations in the isotopic

composition of the magmatic rocks. Sr and Pb isotope compositions of the igneous rocks reflect an increasing amount of crustal components, from the SE Rhodopes towards the Central Rhodopes, and thus an increasing proportion of acid rocks coinciding with an increase in crustal thickness (Marchev et al., 1989; 1994). Therefore, crustal contamination could have diluted original mantle magmas containing Cu and Au with an increasing contribution of Pb from a continental basement source (Taylor et al., 1980; Dickin, 1981). Pb-rich deposits are typical in other areas with thick crust, such as those in Central Honduras, a convergent margin underlain by more than 40 km of continental crust (Kesler, 1997). Kesler (1978) previously pointed out that the most Au-rich ore deposits in Central America occur in areas with more primitive and/or thinner crust.

Sr and Pb data for the metamorphic-hosted and sediment-hosted deposits show some additional contribution from metamorphic rocks, consistent with hydrothermal convection through the Palaeozoic metamorphic basement after the fluids had been released by metamorphic core-complex formation or from deep-seated magma chambers. A similar model has been suggested by Arribas and Tosdal (1994) for the genesis of the polymetallic vein and manto deposits in the Betic Cordillera, Spain.

The metal source for the sediment-hosted low-sulphidation deposits is the most enigmatic. The relationship of the Ada Tepe deposit with the nearby Iran Tepe volcano is doubtful, not only because volcanic activity seems to be younger than the Ada Tepe mineralization but also because there is no hydrothermal activity in the volcano itself. Marchev et al. (2003, 2004b) and Bonev et al. (in press) emphasize the close spatial and temporal association of mineralization to the formation and cooling of the core complex, but they do not exclude a contribution from a deep-seated magma chamber, as suggested for other low-sulphidation deposits (Matsuhisa and Aoki, 1994; Simmons, 1995; cf. Heinrich et al., 2004). A close association between the formation of metamorphic core complexes and magmatic processes has been emphasized by many authors (e.g., Lister and Baldwin, 1993; Hill et al., 1995; Gans and Bohrsen, 1998). It is believed that igneous rocks intruding the lower crust transfer heat and modify its thermal and mechanical properties, enhancing deformation

and strain localization in an extensional environment (see Corti et al., 2003 and references therein). The process can be accompanied by elevated heat flow and hydrothermal activity (Gans and Bohrsen, 1998).

Recently Marchev et al. (2004b) suggested that volcanism in the Eastern Rhodopes was probably preceded by accumulation of magma at greater depths. Findings from a series of ultramafic–mafic xenoliths (Marchev, unpubl. data), brought to the surface by the Krumovgrad alkaline basalts, suggest that large masses of alkaline ultramafic magmas formed layered intrusions in the uppermost mantle and lower and middle crust. Rapid boiling of fluids dissolved from these mafic magmas could have produced bonanza Au veins from silica and Au colloids, similar to those described by Saunders (1994) and Marchev et al. (2004b). Such a mechanism for deposition of bonanza low-sulphidation gold deposits in rift settings has been accepted recently by Sillitoe and Hedenquist (2003). Future age and isotopic studies of the xenoliths, local magmatism and mineralization are necessary to clarify the relationship between these processes.

## 6. Summary and conclusions

Hydrothermal ore deposits in the Rhodopes were formed during the final extensional stage of Cretaceous to Tertiary orogenic collapse, which led to the formation of metamorphic core complexes, block faulting, metamorphism and silicic to intermediate magmatism. The style and composition of the deposits show significant geographical variations, from Pb–Zn–Ag veins and replacement base-metal deposits in the Central Rhodopes, through intermediate-sulphidation epithermal base and precious metal deposits and detachment-related Au deposits in sedimentary basins in the Bulgarian part of the Eastern Rhodopes, to high-sulphidation epithermal deposits in the Greek part of the Rhodopes.

The ore-metal composition of the deposits shows a systematic correlation with the composition of spatially associated magmatic rocks. Metamorphic-hosted hydrothermal deposits (Madan, Laki, Davidkovo) are spatially related to silicic dykes in the metamorphic core complexes and ignimbrites in the nearby depressions, whereas intermediate-sulphidation base- and precious metal-hosted deposits (Chala and Madjarovo)

are structurally related to evolved silicic dykes within highly oxidized and water-rich shoshonitic volcanic rocks. High-sulphidation Au–Cu–base-metal systems in Greece are spatially associated with less oxidized and less water-rich calc-alkaline and high-K calc-alkaline magmas. An interesting type of sediment-hosted low-sulphidation epithermal Au deposit (e.g., Ada Tepe and Rosino) is related to detachment faults.

Close spatial and temporal relationships between the ore deposits and local magmatism indicate that a rapid succession of magmatic and hydrothermal processes resulted from a thermal disturbance of the crust and probably the underlying mantle by large-scale late orogenic extension. Magmatic fluid input was likely in the polymetallic and high-sulphidation Cu–Au deposits, and possibly in the Madan-type Pb–Zn deposits. The sediment-hosted deposits, including Ada Tepe, were formed during late-stage brittle extension, after cooling of the basement rocks in metamorphic core complexes by fluids that may be of metamorphic or deep magmatic origin.

Sr and Pb isotope compositions of sulphides and gangue minerals of ore deposits show an increase of  $^{206}\text{Pb}/^{204}\text{Pb}$  and a decrease of  $^{207}\text{Pb}/^{204}\text{Pb}$  and  $^{87}\text{Sr}/^{86}\text{Sr}$  ratios from west to east, correlating with a similar pattern in magmatic rocks. These variations reflect a decreasing input to the hydrothermal systems of Palaeozoic or older crustal material from the much thicker continental crust in the Central Rhodopes and an increase of mantle contributions towards the Eastern Rhodopes, which are underlain by thinned crust.

In contrast to deposits in the Eastern Rhodopes, hydrothermal minerals in deposits of the Central Rhodopes have more radiogenic  $^{87}\text{Sr}/^{86}\text{Sr}$  and  $^{207}\text{Pb}/^{204}\text{Pb}$  isotope compositions than those of associated silicic magmas. This reflects an additional radiogenic basement input of Sr and Pb to the hydrothermal fluids, consistent with a possible metamorphic fluid contribution from the core complex, or large-scale circulation of mixed magmatic and meteoric fluids through the extensionally fractured gneisses.

## Acknowledgments

This study was carried out in the framework of the European Science Foundation through GEODE and was funded by several projects of the Swiss National

Science Foundation (No. 2000–59544.99 and 200020–100735/1) and the SCOPES programme (7BUPJ062276). Critical reviews by Jeffrey Hedenquist and Peter Larson greatly improved the paper. We thank Derek Blundell for his efforts in organizing this special issue.

## References

- Aldanmaz, E., Pearce, J.A., Thirlwall, M.F., Mitchel, J.G., 2000. Petrogenetic evolution of Late Cenozoic, post-collision volcanism in western Anatolia, Turkey. *Journal of Volcanology and Geothermal Research* 102, 67–95.
- Amov, B., Kolkovski, B., Dimitrov, R., 1993. Genesis and age of hydrothermal ore mineralization in the Rhodope metallogenic zone on the basis of the isotopic composition of lead in galena. *Annuaire de l'Université de Sofia, Faculté de Géologie et Géographie* 85, 73–98 (in Bulgarian).
- Arikas, K., Voudouris, P., 1998. Hydrothermal alterations and mineralizations of magmatic rocks in the southeastern Rhodope Massif. *Acta Vulcanologica* 10, 353–365.
- Arkadakskiy, S., Böhm, S.C., Heaman, L., Cherneva, Z., Stancheva, E., 2000. New U–Pb age results from the Central Rhodope Mts., Bulgaria. In: Bogdanov, K. (Ed.), *Geodynamics and Ore Deposit Evolution of the Alpine–Balkan–Carpathian–Dinaride Province*. Abstracts, ABCD–GEODE 2000 Workshop, Borovets. Sofia University, Bulgaria, p. 5.
- Arnaudov, V., Arnaudova, R., 1982. Comparative geochemistry and conditions of formation of the “South Bulgarian granites”. *Geologica Balcanica* 12, 21–36 (in Russian with English summary).
- Arribas Jr., A., 1995. Characteristics of high-sulfidation epithermal deposits, and their relation to magmatic fluid. In: Thompson, J.F.H. (Ed.), *Magma, Fluids and Ore Deposits: Mineralogical Association of Canada Short Course*, vol. 23, pp. 419–454.
- Arribas Jr., A., Tosdal, R., 1994. Isotopic composition of Pb in ore deposits of the Betic Cordillera, Spain: origin and relationship to other European deposits. *Economic Geology* 89, 1074–1093.
- Atanasov, A., 1959. The structure of the lead–zinc ore deposit of Madjarovo. *Annuaire de l'Université de Sofia, Faculté de Biologie, Géologie et Géographie* 52, 313–348 (in Bulgarian with English Summary).
- Atanasov, A., 1962. Mineralization stages, primary zoning and genesis of the complex ore-deposit of Madjarovo. *Annuaire de l'Université de Sofia, Faculté de Géologie et Géographie* 55, 229–267 (in Bulgarian with English abstract).
- Atanasov, A., 1965. Untersuchungen über die mineral-paragenese und die struktur des Zvezdel–Erzfeldes in den Ostrhodopen. *Annuaire de l'Université de Sofia, Faculté de Géologie et Géographie* 58, 285–323 (in Bulgarian with German abstract).
- Avdev, S., 1997. Ancient and middle-age gold mining at the Eastern Rhodopes. *Geology and Mineral Resources* 6–7, 26–29 (in Bulgarian).
- Beaudoin, G., Taylor, B.E., Sangster, D.F., 1991. Silver–lead–zinc veins, metamorphic core complexes, and hydrologic regimes during crustal extension. *Geology* 19, 1217–1220.

- Beaudoin, G., Taylor, B.E., Sangster, D.F., 1992. Silver–lead–zinc veins and crustal hydrology during Eocene extension, south-eastern British-Columbia, Canada. *Geochimica et Cosmochimica Acta* 56, 3513–3529.
- Berger, B.R., Eimon, P., 1983. Conceptual models of epithermal precious metal deposits. In: Shanks III, W.C. (Ed.), *Volume on Unconventional Mineral Deposits: Society of Mining Engineers. American Institute of Mining Engineering*, pp. 191–205.
- Berger, B.R., Henley, R.W., 1990. Advances in the understanding of epithermal gold–silver deposits, with special references to the western United States. In: Keays, R.R., Ramsay, R.H., Groves, D.I. (Eds.), *The Geology of Gold Deposits: the Perspective in 1988, Economic Geology Monograph*, vol. 6, pp. 405–423.
- Blundell, D.J., Neubauer, F., von Quadt, A., 2002. The timing and location of major ore deposits in an evolving orogen. *Geological Society, London Special Publications* no. 204, 353 pp.
- Bogdanov, K., 1983. Endogene zonality in the Lozen Ore Field, Eastern Rhodope Mountains. *Ore Forming Processes and Mineral Deposits* 18, 48–60 (in Bulgarian with English abstract).
- Bonchev, E., 1971. The Problems of the Bulgarian Geotectonics. *Technika Publishing House, Sofia, Bulgaria*. 204 pp. (in Bulgarian).
- Bonchev, E., 1980. The Transbalkan strip of post-Lutetian tectonomagmatic and metallogenic mobilisation. *Geologica Balcanica* 10, 3–34.
- Bonchev, E., 1988. Notes sur la tectonique Alpine des Balkans. *Société Géologique de France, Bulletin* 8, 241–249.
- Bonev, I., 1968. Pseudomorphose der pyroxene aus den skamerzlagern in Madaner erzrevier. *Bulgarian Academy of Sciences, Bulletin of the Geological Institute. Series: Geochemistry, Mineralogy and Petrography* 17, 221–240 (in Bulgarian with German abstract).
- Bonev, I., 1982. Madan-lead–zinc vein and metasomatic ore deposits; Guide-Book 3: Central Rhodopes. In: Vassileff, L., Tzonev, D., Bonev, I. (Eds.), *International Mineralogical Association, 13th General Meeting. Varna, Bulgaria*, pp. 27–52.
- Bonev, I.K., 1991. Mineralogy and geochemistry of the Ardino polymetallic deposit. *Bulgarian Academy of Sciences, Bulletin of the Geological Institute. Series: Geochemistry, Mineralogy and Petrology* 27, 25–62 (in Bulgarian with English abstract).
- Bonev, N., 2002. Structure and evolution of the Kesebir gneiss dome, eastern Rodopes. Unpublished Ph.D. thesis, University of Sofia, 282 pp. (in Bulgarian).
- Bonev, I.K., Fallick, A.E., Boyce, A.J., 1997. Isotopic composition of primary fluid inclusions in galena. In: Boiron, M.C., Pironon, J. (Eds.), *Proceedings of XIV European Current Research on Fluid Inclusions. ECROFI, Nancy, France*, pp. 48–49.
- Bonev, N., Marchev, P., Singer, B., in press.  $^{40}\text{Ar}/^{39}\text{Ar}$  geochronology constraints on the Middle Tertiary basement extensional exhumation, and its relation to ore-forming and magmatic processes in the Eastern Rhodope (Bulgaria). *Geodinamica Acta*.
- Boyanov, I., Goranov, A., 1994. Paleocene–Eocene sediments from the northern periphery of the Borovica depression and their correlation with similar sediments in the east Rhodopean Paleogene depression. *Review of the Bulgarian Geological Society* 55, 83–102 (in Bulgarian with English abstract).
- Boyanov, I., Goranov, A., 2001. Late Alpine (Paleogene) super-imposed depressions in parts of southeast Bulgaria. *Geologica Balcanica* 34, 3–36.
- Boyanov, I., Mavroudchiev, B., 1961. Der Paläogene magmatismus in den Nordöstlichen Rhodopen. *Annuaire de l'Université de Sofia, Faculté de Géologie et Géographie* 54, 113–157 (in Bulgarian with German abstract).
- Boykova, A., 1999. Moho discontinuity in central Balkan Peninsula in the light of the geostatistical structural analyses. *Physics of the Earth and Planetary Interiors* 114, 49–58.
- Breskovska, V., Bogdanov, K., 1987. Genetic features of the lead–zinc deposits in the Eastern Rhodopes (Bulgaria) in the view of the lead and sulphur isotope studies. *Annuaire de l'Université de Sofia, Faculté de Géologie et Géographie* 81, 55–73.
- Breskovska, V., Gergelchev, V., 1988a. Popsko ore district. In: Dimitrov, R. (Ed.), *Lead–Zinc Deposits in Bulgaria. Technika Publishing House, Sofia*, pp. 137–142 (in Bulgarian).
- Breskovska, V., Gergelchev, V., 1988b. Zvezdel–Pcheloyad ore district. In: Dimitrov, R. (Ed.), *Lead–Zinc Deposits in Bulgaria. Technika Publishing House, Sofia*, pp. 137–142 (in Bulgarian).
- Breskovska, V., Gergelchev, V., 1988c. Losen ore district. In: Dimitrov, R. (Ed.), *Lead–Zinc Deposits in Bulgaria. Technika Publishing House, Sofia*, pp. 137–142 (in Bulgarian).
- Breskovska, V., Tarkian, M., 1993. Mineralogy and fluid inclusion study of polymetallic veins in the Madjarovo ore field, Eastern Rhodopes, Bulgaria. *Mineralogy and Petrology* 49, 103–118.
- Bridges, P.S., Gordon, M.J., Michael, C., Ampatzioglou, M., 1997. Gold mineralization at Sappes, northern Greece. In: Harvey, S. (Ed.), *Europe's Major Gold Deposits, Irish Association for Economic Geology. Abstract Volume*, pp. 95–107.
- Buchanan, L.J., 1981. Precious metal deposits associated with volcanic environments in the southwest. In: Dickson, W.R., Payne, W.D. (Eds.), *Relations of Tectonics to Ore Deposits in the Southwest Cordillera, Arizona Geological Society Digest*, 14, pp. 237–262.
- Burchfiel, B.C., 1980. Eastern European Alpine system and the Carpathian orocline as an example of collision tectonics. *Tectonophysics* 63, 31–61.
- Burg, J.P., Ivanov, Z., Ricou, L.E., Dimor, D., Klain, L., 1990. Implications of shear-sense criteria for the tectonic evolution of the Central Rhodope Massif, southern Bulgaria. *Geology* 18, 451–454.
- Burg, J.-P., Godfriaux, I., Ricou, L.E., 1995. Extension of the Mesozoic Rhodope thrust units in the Vertiskos–Kerdyllion Massifs (northern Greece). *Comptes Rendus de l'Académie des Science Paris* 320, Série IIA, 889–896.
- Burg, J.-P., Ricou, L.-E., Ivanov, Z., Godfriaux, I., Dimov, D., Klain, L., 1996. Syn-metamorphic nappe complex in the Rhodope Massif. *Structure and kinematics. Terra Nova* 8, 6–15.
- Burnham, C.W., 1979. Magmas and hydrothermal fluids. In: Barnes, H.L. (Ed.), *Geochemistry of Hydrothermal Ore Deposits*, 2nd edition. *Wiley Interscience, New York*, pp. 71–136.
- Candela, P.A., 1997. A review of shallow, ore-related granites: textures, volatiles, and ore metals. *Journal of Petrology* 38, 1619–1633.



- Carmichael, I.S.E., 1967. The iron–titanium oxides of sialic volcanic rocks and their associated ferromagnesian silicates. *Contributions to Mineralogy and Petrology* 14, 36–64.
- Carrigan, C., Mukasa, S., Haydoutov, I., Kolcheva, K., 2003. Ion microprobe U–Pb zircon ages of pre-Alpine rocks in the Balkan, Sredna Gora, and Rhodope terranes of Bulgaria: constraints on Neoproterozoic and Variscan tectonic evolution. *Journal Czech Geological Society, Abstract volume* 48, 32–33.
- Christofides, G., Soldatos, T., Eleftheriadis, G., Koroneos, A., 1998. Chemical and isotopic evidence for source contamination and crustal assimilation in the Hellenic Rhodope plutonic rocks. *Acta Vulcanologica* 10, 305–318.
- Christova, J., 1995. Cryometric studies of fluid inclusions. *Geology and Mineral Resources* 6–7, 26–28.
- Christova, J., 1996. Temperature, composition and salinity of gold-bearing fluid systems in pre-Alpine and Alpine ore deposits in Bulgaria (according to microthermometric studies of quartz). *Comptes Rendus de l'Académie Bulgare des Sciences* 49, 85–88.
- Conrad, J.E., McKee, E.H., 1996. High-precision  $^{40}\text{Ar}/^{39}\text{Ar}$  ages of rhyolitic host rocks and mineralized veins at the Sleeper Deposit, Humboldt County, Nevada. In: Coyner, A.R., Fahey, P.L. (Eds.), *Geology and Ore Deposits of the American Cordillera. Geological Society of Nevada Symposium Proceedings Reno/Sparks, Nevada, April 1995*, pp. 257–262.
- Corti, G., Bonini, M., Innocenti, F., Manetti, P., Conticelli, S., Innocenti, F., Manetti, P., Sokutis, D., 2003. Analogue modeling of continental extension: a review focused on the relationships between patterns of deformation and the presence of magma. *Earth Science Reviews* 63, 169–247.
- Cvetkovic, V., Harkovska, A., Karamata, S., Knezevic, V., Memovic, E., Pecskey, Z., 1995. Correlation of some Oligocene volcanic complexes along the west–east traverse in central Balkan Peninsula. *Proceedings XV Congress CBGA, 1995, Athens, Greece*, pp. 501–505.
- Dachev, K., Volvovsky, I., 1985. Deep structure of Bulgaria along the Petrich–Nicolopol EMCM–DSS traverse. *Bollettino di Geofisica Teorica ed Applicata* 27, 263–278.
- de Boorder, H., Spakman, W., White, S.H., Wortel, M.J.R., 1998. Late Cenozoic mineralization, orogenic collapse and slab detachment in the European Alpine Belt. *Earth and Planetary Science Letters* 164, 569–575.
- Del Moro, A., Innocenti, F., Kyriakopoulos, C., Manetti, P., Papadopoulos, P., 1988. Tertiary granitoids from Thrace (Northern Greece): Sr isotopic and petrochemical data. *Neues Jahrbuch für Mineralogie Abhandlungen* 159, 113–135.
- Dickin, A.P., 1981. Isotope geochemistry of Tertiary igneous rocks from the Isle of Skye, Scotland. *Journal of Petrology* 22, 155–189.
- Dimitrov, R., 1988. Short characteristics of the major lead–zinc ore districts and metallogenic zones. In: Dimitrov, R. (Ed.), *Lead–Zinc Deposits in Bulgaria*. Technika Publishing House, Sofia, pp. 29–36 (in Bulgarian).
- Dimitrov, D., Dimitrov, S., 1974. Mineralogy and zonality of the lead–zinc deposits of Spahievo ore field. *Bulletin of the Geological Institute, Series Metallic and Nonmetallic Mineral Deposits* 23, 135–156 (in Bulgarian with French abstract).
- Dimitrov, D., Krusteva, M., 1974. Formation temperature of the lead zinc deposits in the Spahievo ore field. *Bulletin of the Geological Institute, Series Metallic and Nonmetallic Mineral Deposits* 23, 157–174 (in Bulgarian with English abstract).
- Dinter, D.A., Royden, L., 1993. Late Cenozoic extension in north-eastern Greece: Strimon valley detachment and Rhodope metamorphic core complex. *Geology* 21, 45–48.
- Dokov, R., Vassileff, L., Staikov, M., Simov, S., Panayotov, A., 1989. Metallogenic map of Bulgaria 1:100 000. *Komplex Institute for Exploration and Design in Map-making, Sofia*.
- Dragiev, H., Danchev, J., 1990. Morphological–structural specialities of metasomatic deposits in the Erma Reka-area in the Madan's ore field. *Geologica Rhodopica, vol. 2*. Aristotle University Press, pp. 352–361.
- Eleftheriadis, G., 1995. Petrogenesis of the Oligocene volcanics from the Central Rhodope Massif (N. Greece). *European Journal of Mineralogy* 7, 1169–1182.
- Eleftheriadis, G., Lippolt, H.J., 1984. Altersbestimmungen zum oligozänen Vulkanismus der Süd-Rhodopen/Nord-Griechenland. *Neues Jahrbuch für Geologie und Paläontologie, Monatshefte* 3, 179–191.
- Foley, S.F., Venturelli, G., Green, D.H., Toscani, L., 1987. The ultrapotassic rocks: characteristics, classification and constraints for petrogenetic models. *Earth Science Reviews* 24, 81–134.
- Francalanci, L., Civetta, L., Innocenti, F., Manetti, P., 1990. Tertiary–Quaternary alkaline magmatism of the Aegean–western Anatolian area: a petrological study in the light of a new geochemical and isotopic data. In: Savascin, M.Y., Eronat, A.H. (Eds.), *Proceedings of the International Earth Science Congress on Aegean Regions 1–6 October, 1990, Ismir, Turkey*, pp. 385–390.
- Frei, R., 1995. Evolution of mineralizing fluid in the porphyry copper system of the Scouries deposit, northeast Chalkidiki (Greece): evidence from combined Pb–Sr and stable isotope data. *Economic Geology* 90, 746–762.
- Gans, P.B., Bohron, W.A., 1998. Suppression of volcanism during rapid extension in the Basin and Range Province, United States. *Science* 279, 66–68.
- Georgiev, V., Milovanov, P., Monchev, P., 2003. K–Ar dating of the magmatic activity in the Momchilgrad volcano–tectonic depression. *Comptes Rendus de l'Académie Bulgare des Sciences* 56, 49–54.
- Gergelchev, V.N., Iosifov, D.S., Vaptsarov, I.N., 1977. Typical features of the structure and evolution of the Lozen dome structure. *Ore-Forming Processes and Ore Deposits* 7, 3–21 (in Russian with English abstract).
- Goranov, A., Atanasov, G., 1992. Lithostratigraphy and formation conditions of Maastrichtian–Paleocene deposit in Krumovgrad District. *Geologica Balcanica* 22, 71–82.
- Guillou-Frottier, L., Burov, E.B., Milési, J.-P., 2000. Genetic links between ash-flow calderas and associated ore deposits as revealed by large-scale thermo-mechanical modelling. *Journal of Volcanology and Geothermal Research* 102, 339–361.
- Harkovska, A., Yanev, Y., Marchev, P., 1989. General features of the Paleogene orogenic magmatism in Bulgaria. *Geologica Balcanica* 19, 37–72.



- Harkovska, A., Marchev, P., Machev, Ph., Pecskay, Z., 1998a. Paleogene magmatism in the Central Rhodope area, Bulgaria — a review and new data. *Acta Vulcanologica* 10, 199–216.
- Harkovska, A., Pecskay, Z., Marchev, P., Popov, M., 1998b. How old the acid dykes of the Zvezdel swarm (Eastern Rhodopes, Bulgaria) are? *Geologica Balcanica* 28, 69–70.
- Haydoutov, I., Kolcheva, K., Daieva, L., Savov, I., 2001. Island-arc origin of the variegated formations from the east Rhodopes (Avren synform and Bela Reka antiform), Bulgaria. Abstracts, Joint Meeting of EUROPROBE TESZ, TIMPEBAR, URALIDES and SW-IBERIA projects. 30 September–2 October, Middle East Technical University, Ankara, Turkey, p. 31–32.
- Heald, P., Foley, N.K., Hayba, D.O., 1987. Comparative anatomy of volcanic-hosted epithermal deposits — acid-sulfate and adularia-sericite types. *Economic Geology* 82, 1–26.
- Hedenquist, J.W., 1987. Mineralization associated with volcanic-related hydrothermal systems in the Circum-Pacific Basin. In: Horn, M.K. (Ed.), *Transactions of the Fourth Circum-Pacific Energy and Mineral Resources Conference*, Singapore. American Association of Petroleum Geologists, pp. 513–524.
- Hedenquist, J.W., Izawa, E., Arribas Jr., A., White, N.C., 1996. Epithermal gold deposits: styles, characteristics and exploration. *Society of Resource Geology Special Publication* 1, poster and booklet. 17 pp.
- Hedenquist, J.W., Arribas, A.R., Gonzales-Urien, E., 2000. Exploration for epithermal gold deposits. In: Hagemann, S.G., Brown, P.E. (Eds.), *Gold in 2000, Reviews in Economic Geology*, vol. 13, pp. 245–277.
- Heinrich, C.A., Neubauer, F., 2002. Cu–Au–Pb–Zn–Ag metallogeny of the Alpine–Balkan–Carpathian–Dinaride geodynamic province. *Mineralium Deposita* 37, 533–540.
- Heinrich, C.A., Driesner, T., Stefánsson, A., Seward, T.M., 2004. Magmatic vapor contraction and the transport of gold from the porphyry environment to epithermal ore deposits. *Geology* 32, 761–764.
- Henry, C.D., Elson, H.B., McIntosh, W.C., Heizler, M.T., Castor, S.B., 1997. Brief duration of hydrothermal activity at Round Mountain, Nevada, determined from  $^{40}\text{Ar}/^{39}\text{Ar}$  geochronology. *Economic Geology* 92, 807–826.
- Hill, E.J., Baldwin, S.L., Lister, G.S., 1995. Magmatism as an essential driving force for formation of active metamorphic core complexes in eastern Papua, New Guinea. *Journal of Geophysical Research* 100, 10441–10451.
- Innocenti, F., Kolios, N., Manetti, P., Mazzuoli, R., Peccerillo, A., Rita, F., Villari, L., 1984. Evolution and geodynamic significance of the Tertiary orogenic volcanism in northeastern Greece. *Bulletin Volcanologique* 47, 25–37.
- Ivanov, R., 1960. Magmatism in the East Rhodope Paleogene depression. Part I. *Travaux sur la Géologie de Bulgarie. Série de Géochimie et des Gîtes Métallifères et Non-Métallifères* 1, 311–387 (in Bulgarian with German abstract).
- Ivanov, R., 1963. Magmatism in the east-Rhodopean Paleogenic depression. II. Petrochemical evolution and provincial peculiarities. *Travaux sur la Géologie de Bulgarie, Série de Géochimie, Mineralogie et Pétrographie* 4, 297–323 (in Bulgarian with English abstract).
- Ivanov, R., 1964. Formations and petrochemical zonality of the Tertiary magmatism of the Rhodope central massif. *Bulgarian Academy of Sciences. Bulletin of the Geological Institute* 13, 135–167 (in Bulgarian with English abstract).
- Ivanov, R., 1968. Zonal arrangement of rock series with respect to deep-seated masses. *Proceedings of the XXIII International Geological Congress*, vol. 1, pp. 43–56.
- Ivanov, R., 1972. Volcano-tectonic structures in the Borovitz depression. *Bulgarian Academy of Sciences, Bulletin of the Geological Institute, Series Geochemistry Mineralogy and Petrography* 21, 193–210.
- Ivanov, R., 1983. Gravity tectonics of the Rhodopian tertiary swells and the formation of the deep feeding structures for magmas and ore deposits forming fluids. *Annual book of the High Institute of Mining and Geology* 29, 53–62 (in Bulgarian).
- Ivanov, Z., 1989. Structure and tectonic evolution of the central parts of the Rhodope Massif. In: Ivanov, Z. (Ed.), *Guide to excursion E3, XIV Congress of the Carpathian–Balkan Geological Association*. Publishing House “G. Dimitrov” Yambol, Sofia, pp. 53–91 (in Russian).
- Ivanov, R., Kopp, K.O., 1969. Das Alttertiär Thrakiens und der Ostrodope. *Geologica et Paleontologica* 3, 123–151.
- Ivanov, Z., Dimov, D., Sarov, S., 2000. Tectonic position, structure and tectonic evolution of the Rhodopes massif. In: Ivanov, Z. (Ed.), *Structure, Alpine Evolution and Mineralizations of the Central Rhodope area (South Bulgaria)*, ABCD–GEODE 2000 workshop, Borovets. Sofia University, Bulgaria, pp. 1–20.
- Jaranov, D., 1960. Tectonics of Bulgaria. *Technica*, Sofia. 283 pp. (in Bulgarian).
- Jensen, E.P., Barton, M.D., 2000. Gold deposits related to alkaline magmatism. In: Hagemann, S.G., Brown, P.E. (Eds.), *Gold in 2000, Reviews in Economic Geology*, vol. 13, pp. 279–314.
- John, D.A., 2001. Miocene and Early Pliocene epithermal gold–silver deposits in the Northern Great Basin, Western USA: characteristics, distribution and relationship to magmatism. *Economic Geology* 96, 1827–1854.
- Jones, C.E., Tamey, J., Baker, J.H., Gerouki, F., 1992. Tertiary granitoids of Rhodope, northern Greece: magmatism related to extensional collapse of the Hellenic orogen? *Tectonophysics* 210, 295–314.
- Juteau, M., Michard, A., Albarède, F., 1986. The Pb–Sr–Nd isotope geochemistry of some recent circum-Mediterranean granites. *Contributions to Mineralogy and Petrology* 92, 331–340.
- Kaiser-Rohrmeier, M., Handler, R., von Quadt, A., Heinrich, C., 2004. Hydrothermal Pb–Zn ore formation in the central Rhodopian dome, south Bulgaria: review and new time constraints from Ar–Ar geochronology. *Schweizerische Mineralogische und Petrographische Mitteilungen* 84, 37–58.
- Kalogeropoulos, S.I., Kiliass, S.P., Bitzios, D.C., Nicolaou, M., Both, R.A., 1989. Genesis of the Olympias carbonate-hosted Pb–Zn (Au, Ag) sulphide ore deposit, eastern Chalkidiki peninsula, northern Greece. *Economic Geology* 84, 1210–1234.
- Katskov, N., 1981. Bracigovo–Dospat volcanic massif. In: Harkovska, A., Yanev, Y. (Eds.), *Paleogene Volcanism in Mesta Graben, Central and East Rhodopes (South Bulgaria)*. Guidebook, Problem Commission IX, Sofia, pp. 33–42 (in Russian).

- Kesler, S.E., 1978. Metallogensis of the Caribbean region. *Journal of the Geological Society, London* 135, 429–441.
- Kesler, S.E., 1997. Metallogenic evolution of convergent margins: selected ore deposit models. *Ore Geology Reviews* 12, 153–171.
- Kober, L., 1928. *Die Grossgliederung Der Dinariden*. Borntraeger, Berlin. 499 pp.
- Kockel, F., Molat, H., Walther, A.W., 1976. Geological map of the Chalkidiki peninsula and adjacent areas (Greece) 1:100 000. Bundesanstalt Für Geowissenschaft Und Rohstoffe, Erläuterungen, 4 maps, 119 pp.
- Kolčeva, K., Eskenazy, G., 1988. Geochemistry of metaeclogites from the Central and Eastern Rhodope Mts (Bulgaria). *Geologica Balcanica* 18, 61–78.
- Kolčeva, K., Željačkova-Panajotova, M., Dobrecov, N.L., Stojanova, V., 1986. Eclogites in the Central Rhodope Metamorphic Group and their retrograde metamorphism. *Geochemistry, Mineralogy and Petrology* 20–21, 130–144.
- Kolkovski, B., Petrov, P., 1972. On temperature of ore forming in deposits along Spoluka–Laikov Choukar fault, Madan district. *Annuaire de l'Université de Sofia, Faculté de Géologie et Géographie* 64, 225–233.
- Kolkovski, B., Dobrev, S., 2000. Ore mineralization in the Central Rhodopes. In: Ivanov, Z. (Ed.), *Structure, Alpine Evolution and Mineralizations of the Central Rhodope Area (South Bulgaria)*, ABCD–GEODE 2000 workshop, Borovets. University of Sofia, Bulgaria, pp. 21–42.
- Kolkovski, B., Mavroudchiev, B., Iliev, Z., Gergelchev, V., 1974. The Madjarovo polymetallic deposit. In: Dragov, P., Kolkovski, B. (Eds.), *Twelve Ore Deposits of Bulgaria*. International Association on the Genesis of Ore Deposits, IV Symposium, Varna. University of Sofia, Bulgaria, pp. 192–215.
- Kolkovski, B., Melnikov, F.P., Petrov, P., 1978. Temperature of mineral forming in base metal deposits from Madan ore field (Bulgaria). In: Ermakov, N.P., et al., (Eds.), *Theory and Practice of Thermobarogeochemistry*. Nauka, Moscow, pp. 116–118 (in Russian).
- Kolkovski, B., Dobrev, S., Petrov, P., Manev, D., 1996. Geology, mineralogy and genesis of Madan ore field. In: Popov, P. (Ed.), *Plate Tectonic Aspects of the Alpine Metallogeny in the Carpatho–Balkan-Region*, vol. 2. University of Mining and Geology, Sofia, pp. 157–173.
- Kolocotroni, C., Dixon, J.E., 1991. The origin and emplacement of the Vrontou granite, Serres, N.E. Greece. *Bulletin of the Geological Society of Greece* 25, 469–483.
- Kostov, I., 1954. Andalusite in pegmatite from Ardino, central Rhodopian mountains. *Annuaire de l'Université de Sofia, Faculté de Biologie, Géologie et Géographie* 48, 1–22 (in Bulgarian with English abstract).
- Kostova, B., Pettko, T., Driesner, T., Petrov, P., Heinrich, C.A., 2004. LA ICP–MS study of fluid inclusions in quartz from the Yuzhna Petrovitsa deposit, Madan ore field, Bulgaria. *Schweizerische Mineralogische und Petrographische Mitteilungen* 84, 25–36.
- Kozhoukharov, D., Kozhoukharova, E., Papanikolaou, D., 1988. Precambrian in the Rhodope Massif. In: Zoubek, V. (Ed.), *Precambrian in Younger Fold Belts*. John Wiley and Sons, Chichester, pp. 723–778.
- Kozhoukharova, E., 1984. Origin and structural position of the serpentinized ultrabasic rocks of the Precambrian ophiolitic association in the Rhodope Massif: I. Geologic position and composition of ophiolite association. *Geologica Balcanica* 14, 9–36 (in Russian).
- Krasteva, M., Stoyanova, M., 1988. Fluid inclusions in quartz from the deposits in the Laki ore field, Central Rhodope Mts. Bulgarian Academy of Sciences, *Bulletin of the Geological Institute, Series Geochemistry Mineralogy and Petrology* 24, 41–54 (in Bulgarian).
- Krohe, A., Mposkos, E., 2002. Multiple generations of extensional detachments in the Rhodope mountains (northern Greece): evidence of episodic exhumation of high-pressure rocks. In: Blundell, D.J., Neubauer, F., von Quadt, A. (Eds.), *The Timing and Location of Major Ore Deposits in an Evolving Orogen*. Geological Society, London, Special Publications no. 204, pp. 151–178.
- Kunov, A., 1991a. Secondary quartzites from the northeastern periphery of the Borovitsa volcanic area: I. Geological–petrographic characteristics of the hydrothermally altered zones. Bulgarian Academy of Sciences, *Bulletin of the Geological Institute, Series Geochemistry, Mineralogy and Petrology* 28, 46–72.
- Kunov, A., 1991b. Secondary quartzites from the northeastern periphery of the Borovitsa volcanic area: II. Mineralogy and zoning. Bulgarian Academy of Sciences, *Bulletin of the Geological Institute, Series Geochemistry, Mineralogy and Petrology* 29, 17–36.
- Kunov, A., Christova, J., Stamatova, V., Atanassova, P., 1999. Type of wall-rock alteration and character of the ore–metasomatic systems in some meso- and epithermal gold and gold-bearing deposits and occurrences in Bulgaria. III National Symposium in Metallogeny of Bulgaria. Abstracts, 58–61.
- Kunov, A., Velinov, I., Yanev, Y., Nakov, R., Stefanov, N., Pecsckay, Z., 2000. The epithermal gold deposit of Obichnik, Eastern Rhodopes. *Mining and Geology* 2, 28–35 (in Bulgarian with English abstract).
- Kyriakopoulos, K., 1987. A geochronological, geochemical and mineralogical study on some Tertiary plutonic rocks of the Rhodope Massif and their isotopic characteristics. Ph.D. Thesis, University of Athens, Greece, 343 pp. (in Greek).
- Lattanzi, P., 1999. Epithermal precious metal deposits of Italy – an overview. *Mineralium Deposita* 34, 630–638.
- Lescuyer, J.L., Bailly, L., Cassard, D., Lips, A.L.W., Piantone, P., McAlister, M., 2003. Sediment-hosted gold in south-eastern Europe: the epithermal deposit of Perama, Thrace, Greece. In: Eliopoulos, D., et al. (Eds.), *Mineral Exploration and Sustainable Development*. Millpress, Rotterdam, pp. 499–502.
- Liati, A., Seidel, E., 1996. Metamorphic evolution and geochemistry of kyanite eclogites in Central Rhodope, northern Greece. *Contributions to Mineralogy and Petrology* 123, 293–307.
- Liati, A., Gebauer, D., 1999. Constraining the prograde and retrograde  $P$ – $T$ – $t$  path of Eocene HP-rocks by SHRIMP dating of different zircon domains: inferred rates of heating, burial, cooling and exhumation for Central Rhodope, northern Greece. *Contributions to Mineralogy and Petrology* 135, 340–354.

- Liati, A., Gebauer, D., 2001. Palaeozoic as well as Mesozoic sedimentation and polymetamorphism in Central Rhodope (N. Greece) as inferred from U–Pb SHRIMP-dating of detrital zircons. *EUG XI Journal of Conference Abstracts* 6, 315.
- Liati, A., Gebauer, D., Wysoczanski, R., 2002. U–Pb SHRIMP-dating of zircon domains from UHP garnet-rich mafic rocks and late pegmatoids in the Rhodope zone (N Greece); evidence for Early Cretaceous crystallization and Late Cretaceous metamorphism. *Chemical Geology* 184, 281–299.
- Lilov, P., Yanev, Y., Marchev, P., 1987. K/Ar dating of the Eastern Rhodopes Paleogene magmatism. *Geologica Balcanica* 17, 49–58.
- Lips, A.L.W., 2002. Correlating magmatic–hydrothermal ore deposit formation with geodynamic processes in SE Europe. In: Blundell, D.J., Neubauer, F., von Quadt, A. (Eds.), *The Timing and Location of Major Ore Deposits in an Evolving Orogen*. Geological Society, London, Special Publications no. 204, pp. 69–79.
- Lips, A.L.W., White, S.H., Wijbrans, J.R., 2000. Middle–Late Alpine thermotectonic evolution of the southern Rhodope Massif, Greece. *Geodinamica Acta* 13, 281–292.
- Lister, G.S., Baldwin, S.L., 1993. Plutonism and the origin of metamorphic core complexes. *Geology* 21, 607–610.
- Luhr, J.F., 1992. Slab-derived fluids and partial melting in subduction zones: insights from two contrasting Mexican volcanoes (Colima and Ceboruco). *Journal of Volcanology and Geothermal Research* 54, 1–18.
- Machev, P., Rashkova, G., 2000. Magma mingling and mixing in the Teshovo granitoid pluton (South Pirin Mnts., Bulgaria): I. Field and petrological evidence. *Annuaire de l'Université de Sofia, Faculté de Géologie et Géographie* 93, 143–161.
- Machev, P., Peytcheva, I., Kostitsyn, Y., Rashkova, G., 2000. Magma mingling and mixing in the Teshovo granitoid pluton (south Pirin Mnts., Bulgaria): II. Isotope-geochemical evidence. *Annuaire de l'Université de Sofia, Faculté de Géologie et Géographie* 93, 163–172.
- Mackenzie, D.E., Chappel, B.W., 1972. Shoshonitic and calcalkaline lavas from the highlands of Papua, New Guinea. *Contributions to Mineralogy and Petrology* 35, 50–62.
- Magganas, A., Bigazzi, G., Kyriakopoulos, K., Balestrieri, M.L., 2004. Low-*T* thermochronological evolution of the Vrontou composite pluton (northern Greece) using apatite fission track analyses. In: Chatzipetros, A., Pavlides, S. (Eds.), *Proceedings of 5th International Symposium on Eastern Mediterranean Geology*, Thessaloniki, Greece, vol. 3, pp. 1165–1168.
- Maneva, B., 1988. Spahievo ore district. In: Dimitrov, R. (Ed.), *Lead–Zinc Deposits in Bulgaria*. Technika Publishing House, Sofia, pp. 147–160 (in Bulgarian).
- Maneva, B., Naphtali, L., Manev, D., Kolkovski, B., 1996. Central Rhodope Late Alpine base metal ore district – general overview and metallogeny. In: Popov, P. (Ed.), *Plate Tectonic Aspects of the Alpine Metallogeny in the Carpatho–Balkan-Region*. University of Mining and Geology, Sofia, pp. 107–116.
- Marakis, G., 1969. Geochronology studies of some granites from Macedonia. *Annales Geologiques des Pays Helleniques* 21, 121–152.
- Marchev, P., Rogers, G., 1998. New Rb–Sr data on the bottom and top lava flow of the Madjarovo volcano: inferences for the age and genesis of the lavas. *Bulgarian Academy of Sciences, Bulletin of the Geological Institute, Series Geochemistry, Mineralogy and Petrology* 34, 91–96.
- Marchev, P., Shanov, S., 1991. Potassium and silica variations in the Paleogenic Macedonian–Rhodope–North Aegean Volcanic Belt: geodynamic and petrogenetic implications. *Geologica Balcanica* 21, 3–11.
- Marchev, P., Singer, B., 2002.  $^{40}\text{Ar}/^{39}\text{Ar}$  geochronology of magmatism and hydrothermal activity of the Madjarovo base-precious metal ore district, Eastern Rhodopes, Bulgaria. In: Blundell, D.J., Neubauer, F., von Quadt, A. (Eds.), *The Timing and Location of Major Ore Deposits in an Evolving Orogen*. Geological Society, London, Special Publications no. 204, pp. 137–150.
- Marchev, P., Lilov, P., Amov, B., Arnaudov, V., Yordanov, Y., 1989. Major, trace element, and isotopic (Sr, Pb) zonation in the Eocene–Oligocene Rhodopes Magmatic Zone: evidence for subduction processes and crustal influence. XIV Congress of the Carpathian–Balkan Geological Association, Sofia, extended abstracts, 226–229.
- Marchev, P., Larson, P., Rogers, G., Vaselli, O., Raicheva, R., 1994. Crustal thickness control on the Sr, Nd, and O isotopic variation in the Macedonian–Rhodope–North Aegean Magmatic Belt (MRNAMB). Abstracts. International Volcanological Congress, IAVCEI, Ankara, unpaginated.
- Marchev, P., Nokov, S., McCoyd, R., Jeleu, D., 1997. Alteration processes and mineralizations in the Madjarovo ore field – a brief review and new data. *Bulgarian Academy of Sciences, Bulletin of the Geological Institute, Series Geochemistry, Mineralogy and Petrology* 32, 47–58.
- Marchev, P., Rogers, G., Conrey, R., Quick, J., Vaselli, O., Raicheva, R., 1998a. Paleogene orogenic and alkaline basic magmas in the Rhodope zone: relationships, nature of magma sources, and role of crustal contamination. *Acta Vulcanologica* 10, 217–232.
- Marchev, P., Vaselli, O., Downes, H., Pinarelli, L., Ingram, G., Rogers, G., Raicheva, R., 1998b. Petrology and geochemistry of alkaline basalts and lamprophyres: implications for the chemical composition of the upper mantle beneath the Eastern Rhodopes (Bulgaria). *Acta Vulcanologica* 10, 233–242.
- Marchev, P., Downes, H., Thirlwall, M.F., Moritz, R., 2002. Small-scale variations of  $^{87}\text{Sr}/^{86}\text{Sr}$  isotope composition of barite in the Madjarovo low-sulfidation epithermal system, SE Bulgaria: implications for sources of Sr, fluid fluxes and pathways of the ore-forming fluids. *Mineralium Deposita* 37, 669–677.
- Marchev, P., Singer, B., Andrew, C., Hasson, A., Moritz, R., Bonev, N., 2003. Characteristics and preliminary  $^{40}\text{Ar}/^{39}\text{Ar}$  and  $^{87}\text{Sr}/^{86}\text{Sr}$  data of the Upper Eocene sedimentary-hosted low-sulfidation gold deposits Ada Tepe and Rosino, SE Bulgaria: possible relation with core complex formation. In: Eliopoulos, D., et al., (Eds.), *Mineral Exploration and Sustainable Development*. Millpress, Rotterdam, pp. 1193–1196.
- Marchev, P., Raicheva, R., Downes, H., Vaselli, O., Chiaradia, M., Moritz, R., 2004a. Compositional diversity of Eocene–Oligo-

- cene basaltic magmatism in the Eastern Rhodopes, SE Bulgaria: implications for genesis and tectonic setting. *Tectonophysics* 393, 301–328.
- Marchev, P., Singer, B., Jelev, D., Hasson, S., Moritz, R., Bonev, N., 2004b. The Ada Tepe deposit: a sediment-hosted and detachment fault-controlled low-sulfidation gold mineralization in the Eastern Rhodopes, SE Bulgaria. *Schweizerische Mineralogische und Petrographische Mitteilungen* 84, 59–78.
- Marchev, P., Jelev, D., Hasson, S., 2005. Ada Tepe sedimentary-hosted, low-sulphidation epithermal Au deposit, SE Bulgaria. *Ore Geology Reviews* 27, 92–93 (this volume).
- Marinova, I., Kolkovski, B., 1995. New data on mineralization sequence and mineralogy of Davidkovo ore field, Central Rhodopes. *Annuaire de l'Université de Sofia, Faculté de Géologie et Géographie* 67, 213–247.
- Matsuhisa, Y., Aoki, M., 1994. Temperature and oxygen isotope variations during formations of the Hishikari epithermal gold–silver veins, southern Kyushu. *Japan Economic Geology* 89, 1608–1613.
- Mavroudchiev, B., 1964. Petrology of basaltic magmatism in the Krumovgrad area. *Annuaire de l'Université de Sofia, Faculté de Géologie et Géographie* 57, 295–324 (in Bulgarian with German abstract).
- Mavroudchiev, B., 1965. Gesetzmässigkeiten in der entwicklung des Tertiären tectonomagmatischen zyklus in einem teil des Rhodopen-zwischenmassivs. *Annuaire de l'Université de Sofia, Faculté de Géologie et Géographie* 58, 157–175 (in Bulgarian with German abstract).
- Mavroudchiev, B., Nedyalkov, R., Eleftheriadis, G., Soldatos, T., Christofides, G., 1993. Tertiary plutonic rocks from east Rhodope in Bulgaria and Greece. *Bulletin of the Geological Society of Greece* 28, 643–660.
- McAlister, M., Hammond, J.M., Normand, D., Kampsakalis, M., 1999. Discovery case history for the Perama Hill gold deposit, Greece. In: Currie, D., Nielsen, K. (Eds.), *New Generations Gold Mines '99, Case Histories of Discovery*. Australian Mineral Foundation, Conference Proceedings, Glenside, pp. 22–23 (November, 10 p.).
- McCoyd, R., 1995. Isotopic and geochemical studies of the epithermal–mesothermal Pb–Zn deposits of S.E. Bulgaria. Unpublished Ph.D. thesis, University of Aberdeen, Scotland, 270 pp.
- Melfos, V., Vavelidis, M., Bogdanov, K., 2003. Occurrence, mineralogy and chemical composition of primary gold from Tertiary ore mineralization in the Rhodope Massif (Greece–Bulgaria). In: Eliopoulos, D., et al., (Eds.), *Mineral Exploration and Sustainable Development*. Millpress, Rotterdam, pp. 1201–1204.
- Michael, C., Perdicatis, V., Dimou, E., Marantos, I., 1995. Hydrothermal alteration and ore deposition in epithermal precious metal deposits of Agios Demetrios, Konos area, northern Greece. *Proceedings XV Congress of the Carpathian–Balkan Geological Association, Geological Society of Greece Special Publications no. 4*, pp. 778–782.
- Milev, V., Stanev, V., Ivanov, V., 1996. Mining production in Bulgaria. 1878–1995, *Statistical Reference Book*. Zemina–93 Press. 196 pp. (in Bulgarian).
- Mitchell, A.H.G., 1992. Andesitic arcs, epithermal gold and porphyry-type mineralization in the western Pacific and eastern Europe. *Transactions of the Institution of Mining and Metallurgy (Section B, Applied Earth Science)* 101, 125–138.
- Mitchell, A.H.G., 1996. Distribution and genesis of some epizonal Zn–Pb and Au provinces in the Carpathian–Balkan region. *Transactions of the Institution of Mining and Metallurgy (Section B, Applied Earth Science)* 105, 127–138.
- Mitchell, A.H.G., Carlie, J.C., 1994. Mineralization, antiforms and crustal extension in andesitic arcs. *Geological Magazine* 131, 231–242.
- Mladenova, V., 1998. Mineralogy and the problem of the gold in Sedefche deposit in Eastern Rhodopes. *Annuaire de l'Université de Sofia, Faculté de Géologie et Géographie* 90, 101–130 (in Bulgarian with English summary).
- Moritz, R., Jacquat, S., Chambefort, I., Fontignie, D., Petrunov, R., Georgieva, S., von Quadt, A., 2003. Controls on ore formation at the high-sulphidation Au–Cu Chelopech deposit, Bulgaria: evidence from infrared fluid inclusion microthermometry of enargite and isotope systematics of barite. In: Eliopoulos, D., et al., (Eds.), *Mineral Exploration and Sustainable Development*. Millpress, Rotterdam, pp. 1209–1212.
- Mposkos, E., Krohe, A., 2000. Petrological and structural evolution of continental high pressure (HP) metamorphic rocks in the Alpine Rhodope Domain (N. Greece). In: Panayides, I., Xenopontos, C., Malpas, J. (Eds.), *Proceedings of the 3rd International Conference on the Geology of the Eastern Mediterranean (Nicosia, Cyprus)*. Geological Survey, Nicosia, Cyprus, pp. 221–232.
- Mposkos, E., Wawrzenitz, N., 1995. Metapegmatites and pegmatites bracketing the time of high *P*-metamorphism in polymetamorphic rocks of the E-Rhodope, N. Greece: petrological and geochronological constraints. *Proceedings XV Congress of the Carpathian–Balkan Geological Association, Geological Society of Greece Special Publications no. 4*, pp. 602–608.
- Mukasa, S., Haydoutov, I., Carrigan, C., Kolcheva, K., 2003. Thermobarometry and <sup>40</sup>Ar/<sup>39</sup>Ar ages of eclogitic and gneissic rocks in the Sredna Gora and Rhodope terranes of Bulgaria. *Journal of the Czech Geological Society, Abstract Volume* 48, 94–95.
- Naphtali, L., Malinov, O., 1988. Davidkovo ore field. In: Dimitrov, R. (Ed.), *Lead–Zinc Deposits in Bulgaria*. Technika Publishing House, Sofia, pp. 64–71 (in Bulgarian).
- Nebel, M.L., Hutchinson, R.W., Zartman, R.E., 1991. Metamorphism and polygenesis of the Maden Lakkos polymetallic sulphide deposit, Chalkidiki, Greece. *Economic Geology* 86, 81–105.
- Nedialkov, R., Pe-Piper, G., 1998. Petrology of the volcanism in the southeastern part of the Momchilgrad–Arda volcanic region, southeastern Bulgaria. *Acta Vulcanologica* 10, 243–253.
- Nokov, S., Malinov, O., 1993. Quartz–adularia metasomatites and molybdenium mineralization from the Madjarovo ore field (SE Bulgaria). *Review of the Bulgarian Geological Society* 54, 1–12.
- Nokov, S., Christova, J., Stanchev, C., 1992. Adularia amid hydrothermally altered granites from the Rosino epithermal gold deposit (Krumovgrad district). *Comptes Rendus de l'Académie Bulgare des Sciences* 45, 63–66.



- Ovtcharova, M., von Quadt, A., Cherneva, Z., Peytcheva, I., Heinrich, C.A., Kaiser-Rohrmeier, M., Neubauer, F., Frank, M., 2003. Isotope and geochronological study on magmatism and migmatization in the central Rhodopian core complex, Bulgaria. In: Neubauer, F., Handler, R. (Eds.), *Geodynamics and Ore Deposit Evolution of the Alpine–Balkan–Carpathian–Dinaride Province*. ABCD–GEODE Workshop Proceedings. Seggauberg, Austria, p. 42.
- Palshin, I.G., Simov, S.D., Arakelyans, M.M., Chernyshev, I.V., 1974. The absolute age of Alpine activation affecting the Rhodope median massif, Bulgaria. *Proceedings of the USSR Academy of Sciences, Geological Series*, vol. 4, pp. 13–22.
- Pamić, J., Pècskay, Z., Balen, D., 2000. Lower Oligocene K–Ar ages of high-K calc-alkaline and shoshonitic rocks from the north Dinarides in Bosnia. *Mineralogy and Petrology* 70, 313–320.
- Papanikolaou, D., Panagopoulos, G., 1981. On the structural style of southern Rhodope (Greece). *Geologica Balcanica* 11, 13–22.
- Papazachos, C.B., Skordilis, E.M., 1998. Crustal structure of the Rhodope and surrounding area obtained by non-linear inversion of P and S travel times and its tectonic implications. *Acta Vulcanologica* 10, 339–345.
- Pècskay, Z., Balogh, K., Harkovska, A., 1991. K–Ar dating of the Perelik volcanic massif (Central Rhodopes, Bulgaria). *Acta Geologica Hungarica* 34, 101–110.
- Pècskay, Z., Harkovska, A., Hadjiev, A., 2000. K–Ar dating of Mesta volcanics (SW Bulgaria). *Geologica Balcanica* 30, 3–11.
- Pècskay, Z., Eleftheriadis, G., Koroneos, A., Soldatos, T., Christofides, G., 2003. K/Ar dating, geochemistry and evolution of the Tertiary volcanic rocks (Thrace, northeastern Greece). In: Eliopoulos, D., et al., (Eds.), *Mineral Exploration and Sustainable Development*. Millpress, Rotterdam, pp. 1229–1232.
- Pe-Piper, G., Christofides, G., Eleftheriadis, G., 1998. Lead and neodymium isotopic composition of Tertiary igneous rocks of northern Greece and their regional significance. *Acta Vulcanologica* 10, 255–263.
- Petrov, P., 1981. Primary sectorial fluid inclusions in milk-white quartz. *Comptes Rendus de l'Académie Bulgare des Sciences* 35, 487–490.
- Peytcheva, I., 1997. The Alpine metamorphism in Eastern Rhodopes — Rb–Sr isotope data. *Review of the Bulgarian Geological Society* 58, 157–165 (in Bulgarian with English abstract).
- Peytcheva, I., von Quadt, A., 1995. U–Pb zircon dating of metagranites from Byala-reka region in the east Rhodopes, Bulgaria. *Proceedings XV Congress of the Carpathian–Balkan Geological Association, Geological Society of Greece Special Publications no. 4*, pp. 637–642.
- Peytcheva, I., Kostitsin, Y., Shukolyukov, J.A., 1992. Rb–Sr isotope system of gneisses in the south-eastern Rhodopes (Bulgaria). *Comptes Rendus de l'Académie Bulgare des Sciences* 45, 65–68 (in Russian).
- Peytcheva, I., Sokolov, S., Sekiranov, A., 1993. Rb–Sr isotopic data obtained on pegmatites from the town of Ardino region, Central Rhodopes. *Comptes Rendus de l'Académie Bulgare des Sciences* 46, 63–65 (in Bulgarian).
- Peytcheva, I., Kostitsin, Y., Salmikova, Y., Kamenov, B., Klain, L., 1998a. Rb–Sr and U–Pb isotope data for the Rila–Rhodopes batholith. *Bulgarian Academy of Sciences, Bulletin of the Geological Institute, Series Geochemistry, Mineralogy and Petrology* 35, 93–105 (in Bulgarian with English abstract).
- Peytcheva, I., Ovtcharova, M., Sarov, S., Kostitsin, Y., 1998b. Age and metamorphic evolution of metagranites from Kessebir Reka region, Eastern Rhodopes — Rb–Sr isotope data. *Abstracts XVI Congress of Carpathian–Balkan Geological Association, Austria*, 471.
- Peytcheva, I., von Quadt, A., Kouzmanov, K., Bogdanov, K., 2003. Elshitsa and Vlaykov Vruh epithermal and porphyry Cu (–Au) deposits of central Srednogorie, Bulgaria: source and timing of magmatism and mineralisation. In: Eliopoulos, D., et al., (Eds.), *Mineral Exploration and Sustainable Development*. Millpress, Rotterdam, pp. 371–374.
- Piperov, N.B., Penchev, N.B., Bonev, I.K., 1977. Primary fluid inclusions in galena crystals. 2. Chemical composition of the liquid and gas phase. *Mineralium Deposita* 12, 77–89.
- Pljushtev, E., Dimitrov, D., Georgieva, I., Petrova, K., 1995. Zonality of the hydrothermal metasomatic mineralization of the Popsko ore field. *Geology and Mineral Resources* 6–7, 37–42 (in Bulgarian with English abstract).
- Plyusnin, G.S., Marchev, P.G., Antipin, V.S., 1988. Rubidium–strontium age and genesis of rocks of the shoshonite–latite series in the Eastern Rhodope, Bulgaria. *Doklady Akademii Nauk SSSR* 303, 719–724.
- Radonova, T., 1960. Untersuchungen über die mineralogische Zusammensetzung und die Umwandlungen der Nebengesteine der Blei–Zink Lagerstätte Madjarovo in den ostlichen Rhodopen. *Travaux sur la Géologie de Bulgarie, Série de Géochemie et des Gîtes Métallifères et Non-Métallifères* 1, 115–197 (in Bulgarian with German abstract).
- Radonova, T., 1973a. Hydrothermal alterations of the rocks in the Spahievo ore field. *Bulgarian Academy of Sciences, Bulletin of the Geological Institute, Series Geochemistry, Mineralogy and Petrography* 23, 141–161 (in Bulgarian with English abstract).
- Radonova, T., 1973b. Metasomatic alterations of the rocks in Zvezdel ore region. *Bulgarian Academy of Sciences, Bulletin of the Geological Institute, Series Geochemistry, Mineralogy and Petrography* 22, 139–159 (in Bulgarian with English abstract).
- Reischmann, T., Kostopoulos, D., 2002. Timing of UHPM in metasediments from the Rhodope Massif, N Greece. *Gold-schmidt Conference Abstracts, Geochimica et Cosmochimica Acta* 66 (15A), A634.
- Richards, J.P., 1995. Alkalic type epithermal gold deposits – a review. In: Thompson, J.F.H. (Ed.), *Magmas, Fluids, and Ore Deposits*, Mineralogical Association of Canada Short Course, no. 23, pp. 367–400.
- Ricou, L.-E., Burg, J.-P., Godfriaux, I., Ivanov, Z., 1998. Rhodope and Vardar: the metamorphic and the olistostromic paired belts related to the Cretaceous subduction under Europe. *Geodinamica Acta* 11, 1–25.
- Saunders, J.A., 1994. Silica and gold texture in bonanza ores of the sleeper deposit, Humboldt County, Nevada: evidence for colloids



- and implications for epithermal ore-forming processes. *Economic Geology* 89, 628–638.
- Scarpelis, N., Voudouris, P., Arikas, K., 1999. Exploration for epithermal gold in SW Thrace (Greece): new target areas. In: Stanley, C.J., et al., (Eds.), *Mineral Deposits: Processes to Processing*. Balkema, Rotterdam, pp. 589–592.
- Shanov, S., Kostadinov, I., 1992. Configuration of the deep geophysical discontinuities beneath the territory of Bulgaria. *Geologica Balcanica* 22, 71–79.
- Shaw, A.J., Constantinides, D.C., 2001. The Sapes gold project. *Bulletin of the Geological Society of Greece* 34, 1073–1080.
- Sillitoe, R.H., 2002. Some metallogenic features of gold and copper deposits related to alkaline rocks and consequences for exploration. *Mineralium Deposita* 37, 4–13.
- Sillitoe, R.H., Hedenquist, J.W., 2003. Linkages between volcano-tectonic settings, ore-fluid compositions, and epithermal precious metal deposits. In: Simmons, S.F., Graham, I. (Eds.), *Volcanic, Geothermal, and Ore-Forming Fluids: Rulers and Witnesses of Processes within the Earth*. Society of Economic Geologists Special Publication 10, p. 315–343.
- Simmons, S.F., 1995. Magmatic contributions to low-sulfidation epithermal deposits. In: Thompson, J.F.H. (Ed.), *Magmas, Fluids, and Ore Deposits*, Mineralogical Association of Canada Short Course, no. 23, pp. 455–477.
- Singer, B., Marchev, P., 2000. Temporal evolution of arc magmatism and hydrothermal activity including epithermal gold veins, Borovitsa caldera, southern Bulgaria. *Economic Geology* 95, 1155–1164.
- Soldatos, T., Poli, G., Christofides, G., Eleftheriadis, G., Koroneos, A., Tommasini, S., 1998. Petrology and evolution of transitional alkaline–subalkaline granitoids from Vrontou (NE Greece). *Acta Vulcanologica* 10, 319–330.
- Spencer, J.E., Welty, J.W., 1986. Possible controls of base- and precious-metal mineralization associated with Tertiary detachment faults in the lower Colorado River trough, Arizona and California. *Geology* 14, 195–198.
- Stacey, J.S., Kramers, J.D., 1975. Approximation of terrestrial lead isotopes evolution by two-stage model. *Earth and Planetary Science Letters* 26, 207–221.
- Stamatova, B., 1996. Native gold in Stremtsi ore occurrence. *Geology and Mineral Resources* 9–10, 40–42.
- Stoyanov, R., 1979. Metallogeny of the Rhodope central massif. Nedra, Moscow. 180 pp. (in Russian).
- Strashimirov, S., Georgiev, V., Mitov, V., 1985. Fluid inclusion studies in Batantzi, Krushev Dol, Borieva and Gradishte deposits from the Madan orefield. *Annual of the Higher Institute of Mining and Geology, Sofia* 31, 67–77.
- Taylor, P.N., Moorbath, S., Goodwin, R., Petrykowski, A.C., 1980. Crustal contamination as an indicator of the extent of Early Archean continental crust: Pb isotopic evidence from the Late Archean gneisses of west Greenland. *Geochimica and Cosmochimica Acta* 44, 1437–1453.
- Tzvetanov, R., 1976. Hydrothermal metasomatites in the “Charaaliev Dol–Petrovitsa” fault of the Madan ore field. *Annuaire de l’Université de Sofia, Faculté de Géologie et Géographie* 67, 296–308.
- Vassileva, R.D., Bonev, I.K., 2003. Retrograde alteration of manganese skarns in the Madan Pb–Zn deposits, south Bulgaria. In: Eliopoulos, D., et al., (Eds.), *Mineral Exploration and Sustainable Development*. Millpress, Rotterdam, pp. 403–406.
- Vassileva, R.D., Bonev, I.K., Marchev, P., Atanassova, R., 2005. Pb–Zn deposits in the Madan ore field, south Bulgaria. *Ore Geology Reviews* 27, 90–91 (this volume).
- Velinov, I., Nokov, S., 1991. Main types and metallogenic significance of the Madjarovo hydrothermally altered Oligocene volcanics. *Comptes Rendus de l’Académie Bulgare des Sciences* 44, 65–68.
- Velinov, I., Batandjiev, I., Tcholocov, P., Blazhev, B., 1977. New data about the relationships between structure forming and postmagmatic processes in Madjarovo ore field. *Comptes Rendus De l’Académie Bulgare Des Science* 30, 1749–1752 (in Russian).
- Velinov, I., Kanazirski, M., Kunov, A., 1990. Formational nature and physicochemical conditions of formation of metasomatites in the Spahievo ore field (Eastern Rhodopes, Bulgaria). *Geologica Balcanica* 20, 49–62.
- Venturelli, G., Thorpe, R.S., Dal Piaz, G.V., Del Moro, A., Potts, P.J., 1984. Petrogenesis of calc-alkaline, shoshonitic and associated ultrapotassic Oligocene volcanic rocks from the north-western Alps, Italy. *Contributions to Mineralogy and Petrology* 86, 209–220.
- von Blanckenburg, F., Davies, J.H., 1995. Slab breakoff: a model for syncollisional magmatism and tectonics in the Alps. *Tectonics* 14, 120–131.
- von Blanckenburg, F., Kagami, H., Deutsch, A., Oberli, F., Meier, M., Wiedenbeck, M., Barth, S., Fischer, H., 1998. The origin of Alpine plutons along the Periadriatic lineament. *Schweizerische Mineralogische und Petrographische Mitteilungen* 78, 55–66.
- von Quadt, A., Peytcheva, I., Cvetkovic, V., 2003. Geochronology, geochemistry and isotope tracing of the Cretaceous magmatism of east-Serbia and Panagyurishte District (Bulgaria) as part of the Apuseni–Timok–Srednogorie metallogenic belt in eastern Europe. In: Eliopoulos, D., et al., (Eds.), *Mineral Exploration and Sustainable Development*. Millpress, Rotterdam, pp. 407–410.
- von Quadt, A., Moritz, R., Peytcheva, I., Heinrich, C.A., 2005. Geochronology and geodynamics of Late Cretaceous magmatism and Cu–Au mineralization in the Panagyurishte region of the Apuseni–Banat–Timok–Srednogorie belt (Bulgaria). *Ore Geology Reviews* 27, 95–126 (this volume).
- Voudouris, P., Melfos, V., Vavelidis, M., Arikas, K., 2003. Genetic relation between the Tertiary porphyry Cu(±Mo) and the epithermal Au(±Ag) deposits in the Rhodope metallogenic province, Thrace region, northern Greece. In: Eliopoulos, D., et al., (Eds.), *Mineral Exploration and Sustainable Development*. Millpress, Rotterdam, pp. 541–544.
- Wawrzenitz, N., Mposkos, E., 1997. First evidence for Lower Cretaceous high-*P*/high-*T* metamorphism in the Eastern Rhodope, north Aegean region, north-east Greece. *European Journal of Mineralogy* 9, 659–664.
- Wernicke, B., 1981. Low-angle normal faults in the Basin and Range province: nappe tectonics in an extending orogen. *Nature* 291, 645–648.

- Yanev, Y., Bakhneva, D., 1980. Alpine magmatism in the Carpathian–Balkan area in plate-tectonic models. In: Nachev, I., Ivanov, R. (Eds.), *Geodynamics of the Balkans*. Technika Publishing House, Sofia, pp. 63–75 (in Bulgarian).
- Yanev, Y., Pecskey, Z., 1997. Preliminary data on the petrology and K–Ar dating of the Oligocene volcano, Briastovo, Eastern Rhodopes. *Bulgarian Academy of Sciences, Bulletin of the Geological Institute, Series Geochemistry Mineralogy and Petrology* 32, 59–66.
- Yanev, Y., Mavroudchiev, B., Nedyalkov, R., 1989. Paleogene collision-related basalts and basaltic andesites in the Eastern Rhodopes, Bulgaria. *Journal of Volcanology and Geothermal Research* 37, 187–202.
- Yanev, Y., Innocenti, F., Manetti, P., Serri, G., 1998a. Upper-Eocene–Oligocene collision-related volcanism in Eastern Rhodopes (Bulgaria)–western Thrace (Greece): petrogenetic affinity and geodynamic significance. *Acta Vulcanologica* 10, 279–291.
- Yanev, Y., Stoykov, S., Pecskey, Z., 1998b. Petrology and K–Ar dating of the Paleogene magmatism in the region of the villages Yabalkovo and Stalevo, Eastern Rhodopes volcanic area. *Bulgarian Academy of Sciences, Bulletin of the Geological Institute, Series Geochemistry, Mineralogy and Petrology* 34, 97–110 (in Bulgarian with English abstract).
- Yilmaz, Y., Polat, A., 1998. Geology and evolution of the Thrace volcanism, Turkey. *Acta Vulcanologica* 10, 293–304.
- Zagortchev, I., Moorbath, S., 1986. Problems of metamorphism in the Central Rhodope mts in the light of Rb–Sr isotopic data. *Geologica Balcanica* 16, 61–78 (in Russian with English summary).
- Zagortchev, I., Moorbath, S., Lilov, P., 1987. Radiogeochronologic data on the Alpine magmatism in the western part of the Rhodope Massif. *Geologica Balcanica* 17, 59–71 (in Russian with English abstract).